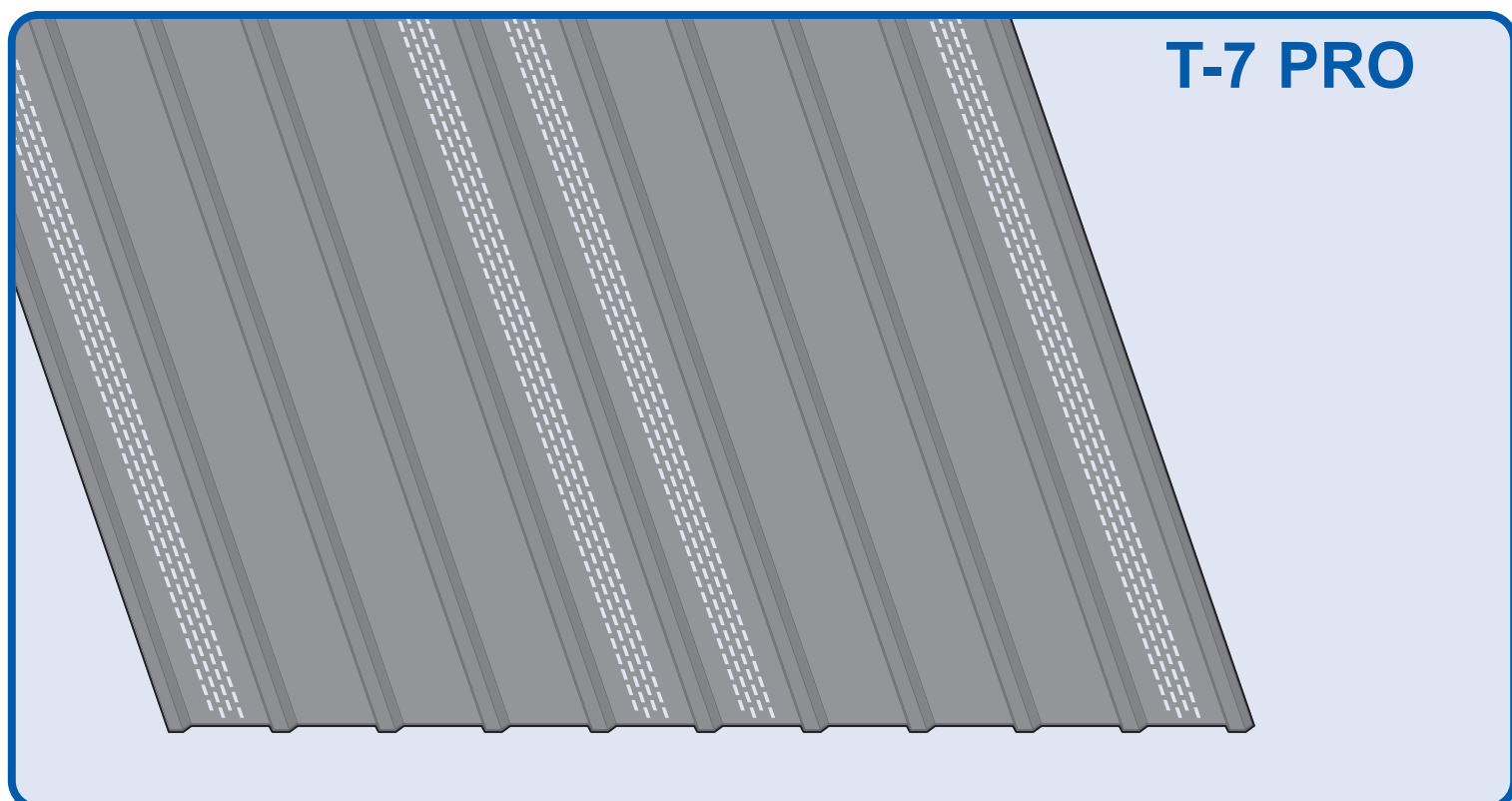
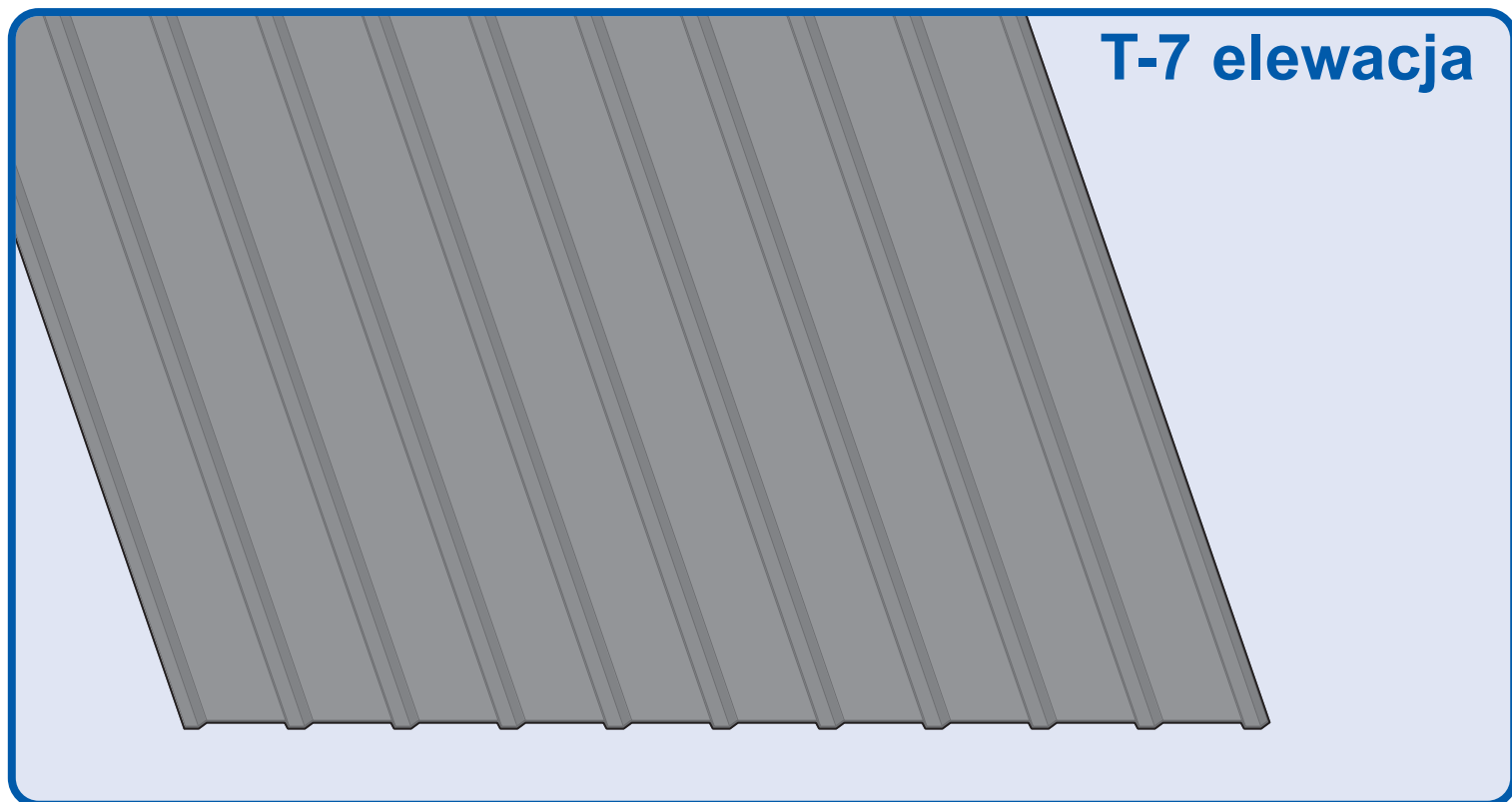
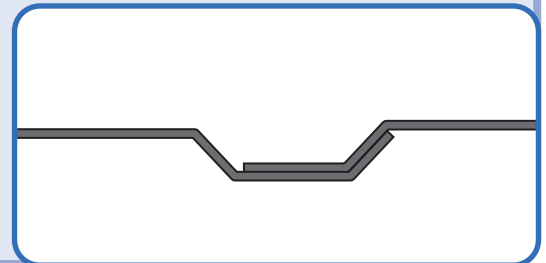
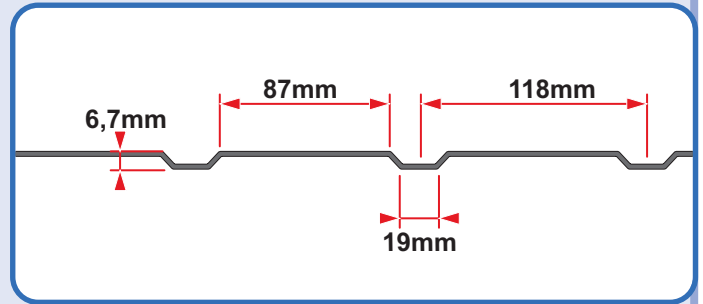
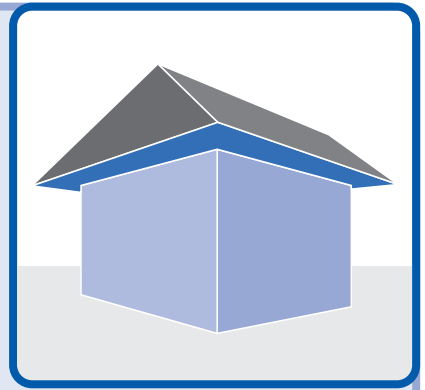
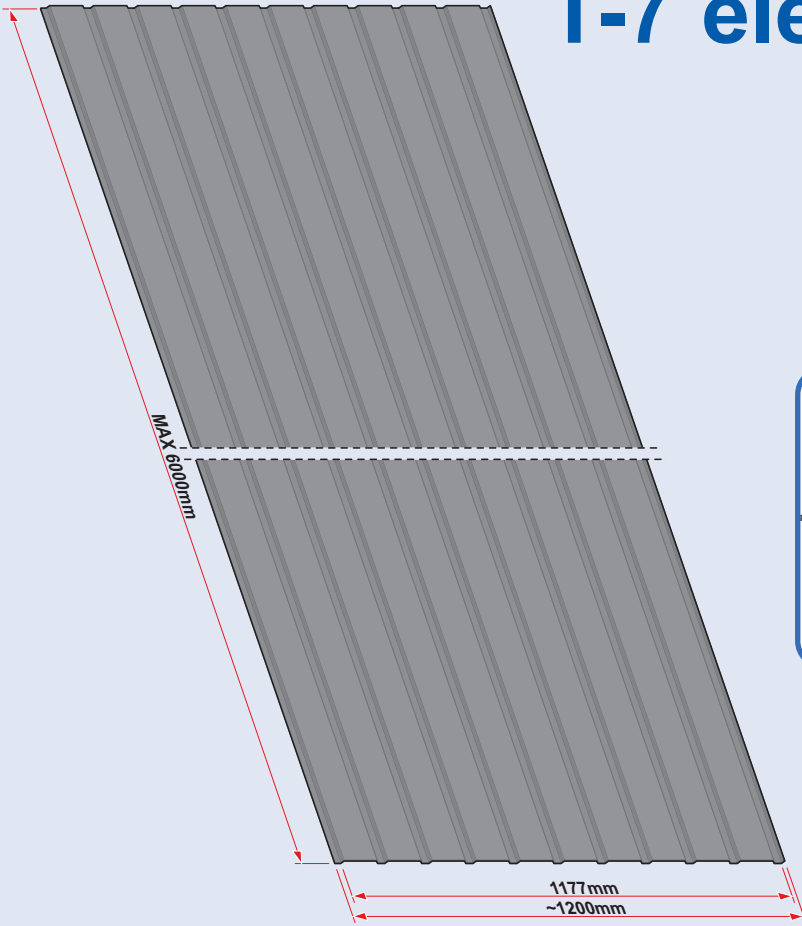


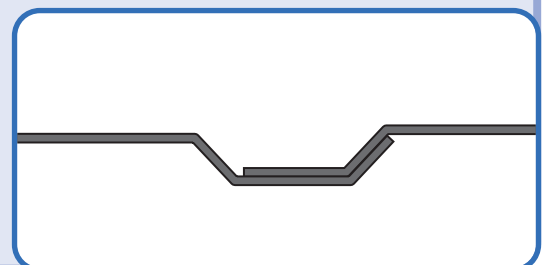
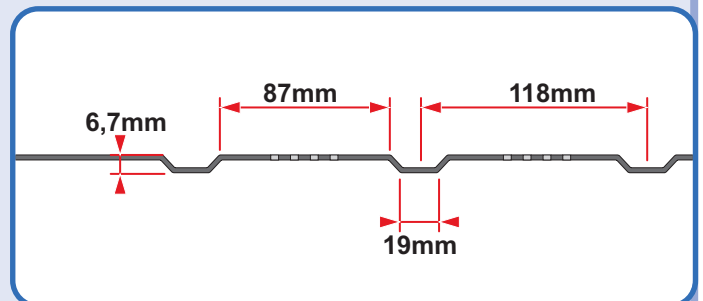
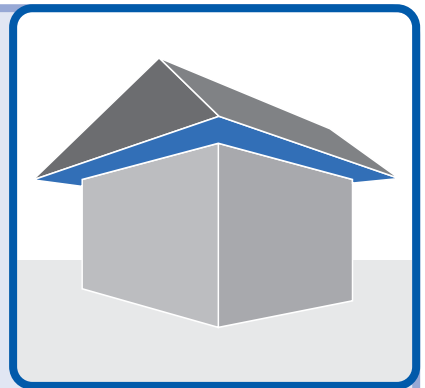
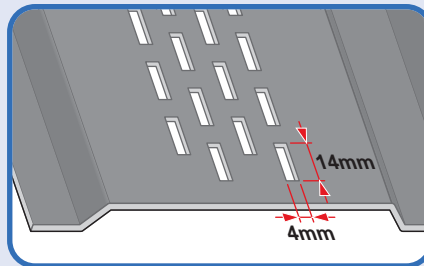
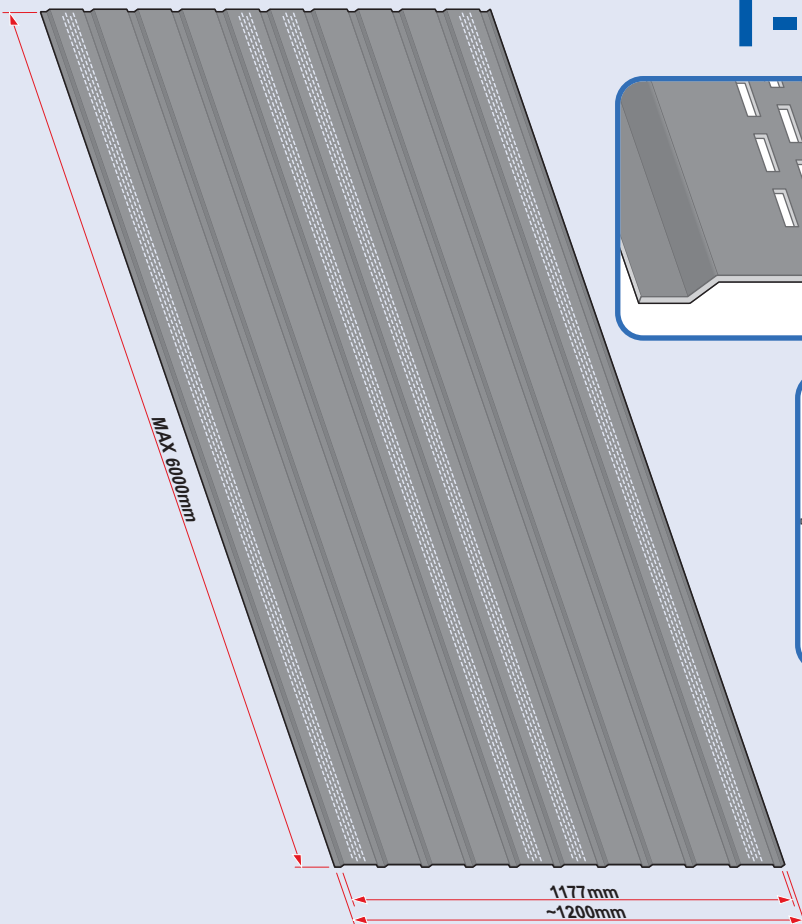
# Návod k montáži



# T-7 elewacja



# T-7 PRO



Technical drawing of a roof eave profile. The profile has a total width of 40mm, a top flange of 12mm, a bottom flange of 30mm, and a central lip of 15mm. A 3D perspective view shows the profile installed at the eave of a house.

Technical drawing of a roof eave profile. The profile has a total width of 30mm, a top flange of 15mm, and a bottom flange of 15mm. The height of the profile is 200mm. A 3D perspective view shows the profile installed at the eave of a house.

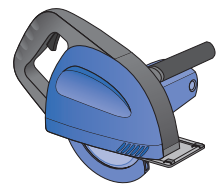
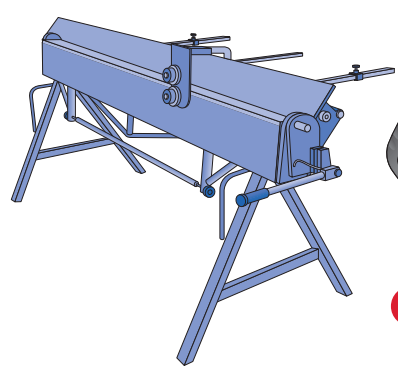
Technical drawing of a roof eave profile. The profile has a total width of 70mm, a top flange of 30mm, a bottom flange of 50mm, and a central lip of 12mm. A 3D perspective view shows the profile installed at the eave of a house.

Technical drawing of a roof eave profile. The profile has a total width of 70mm and a height of 15mm. A 3D perspective view shows the profile installed at the eave of a house.

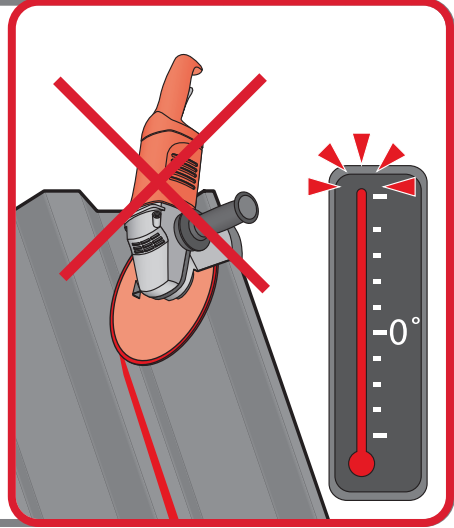
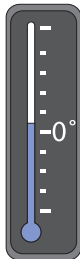
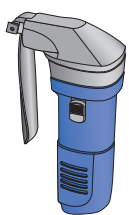
Technical drawing of a roof eave profile. The profile has a total width of 15cm, a top flange of 15mm, and a bottom flange of 70mm. A 3D perspective view shows the profile installed at the eave of a house.

Technical drawing of a roof eave profile. The profile has a total width of 40mm, a top flange of 15mm, a bottom flange of 25mm, and a central lip of 15mm. A 3D perspective view shows the profile installed at the eave of a house.

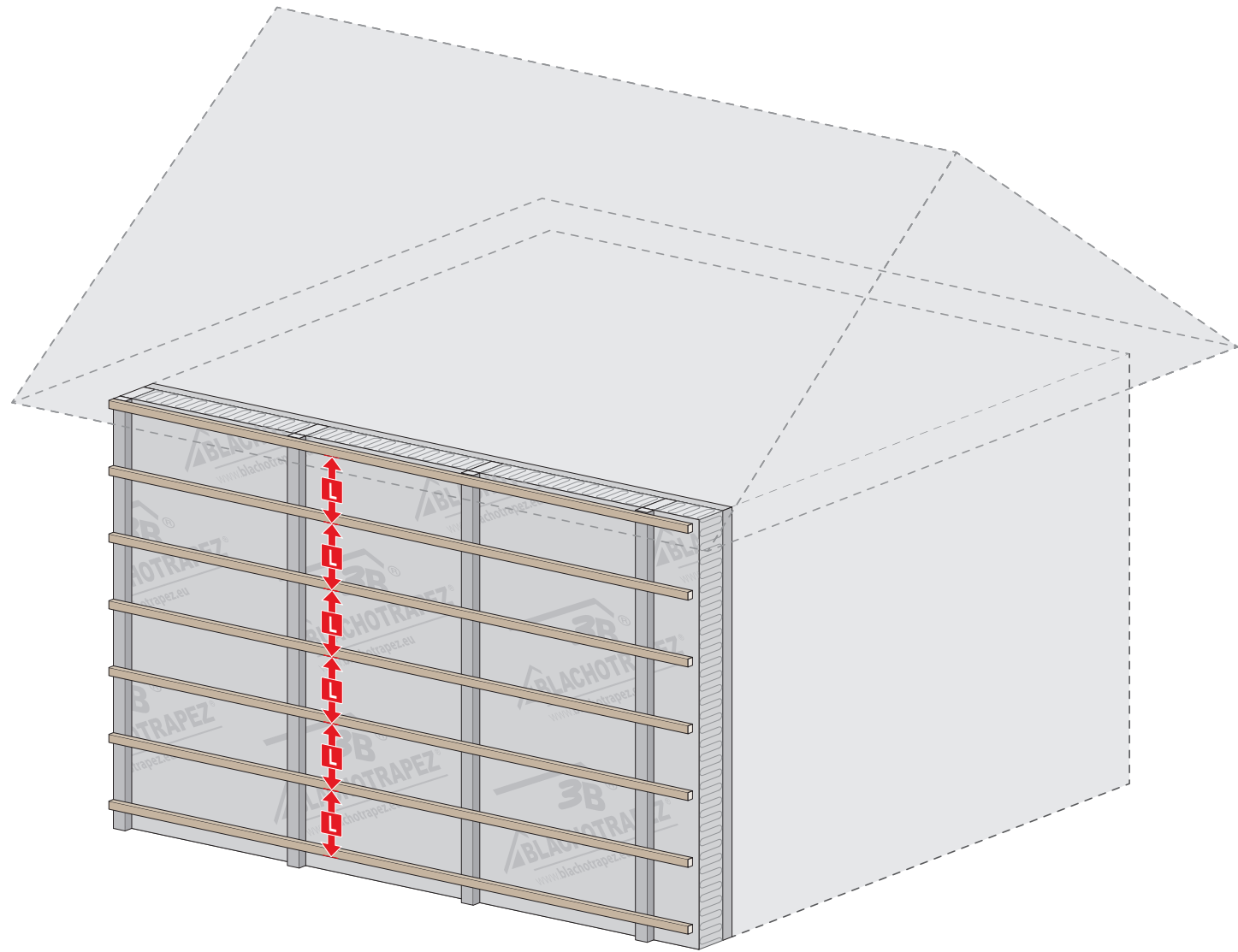
1



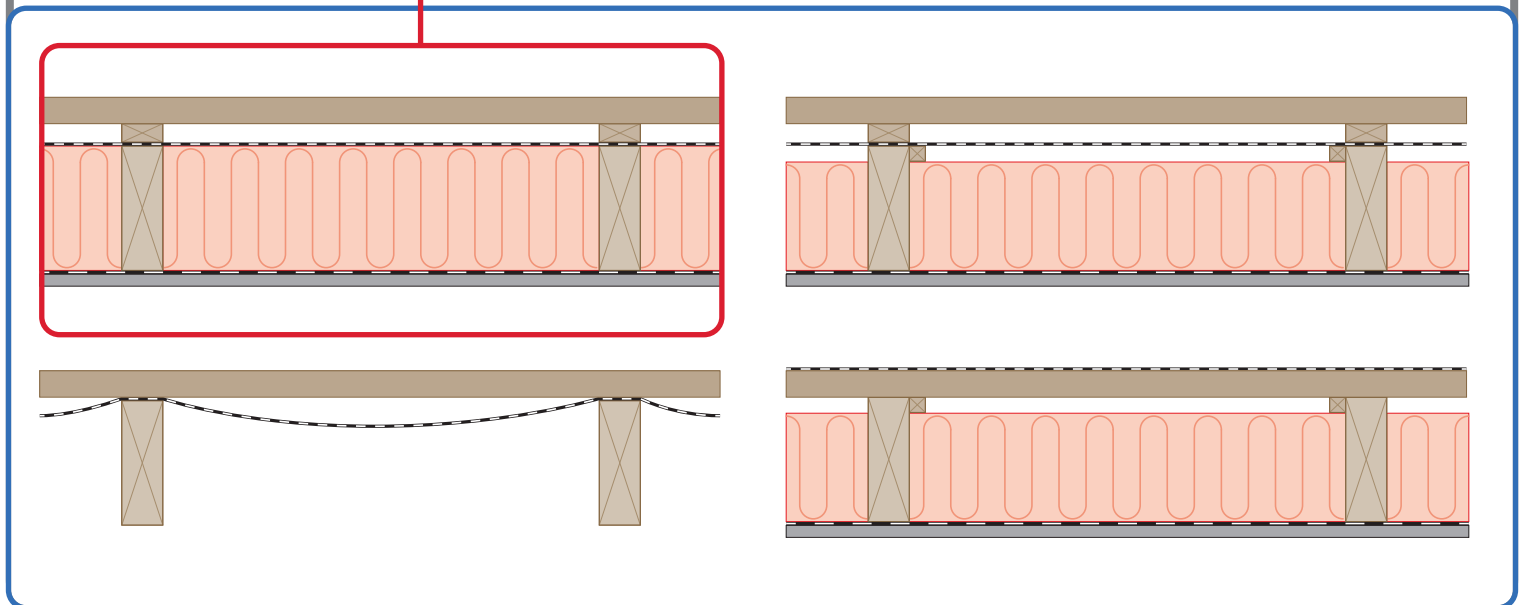
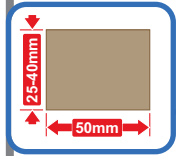
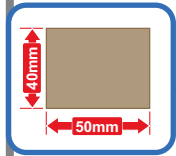
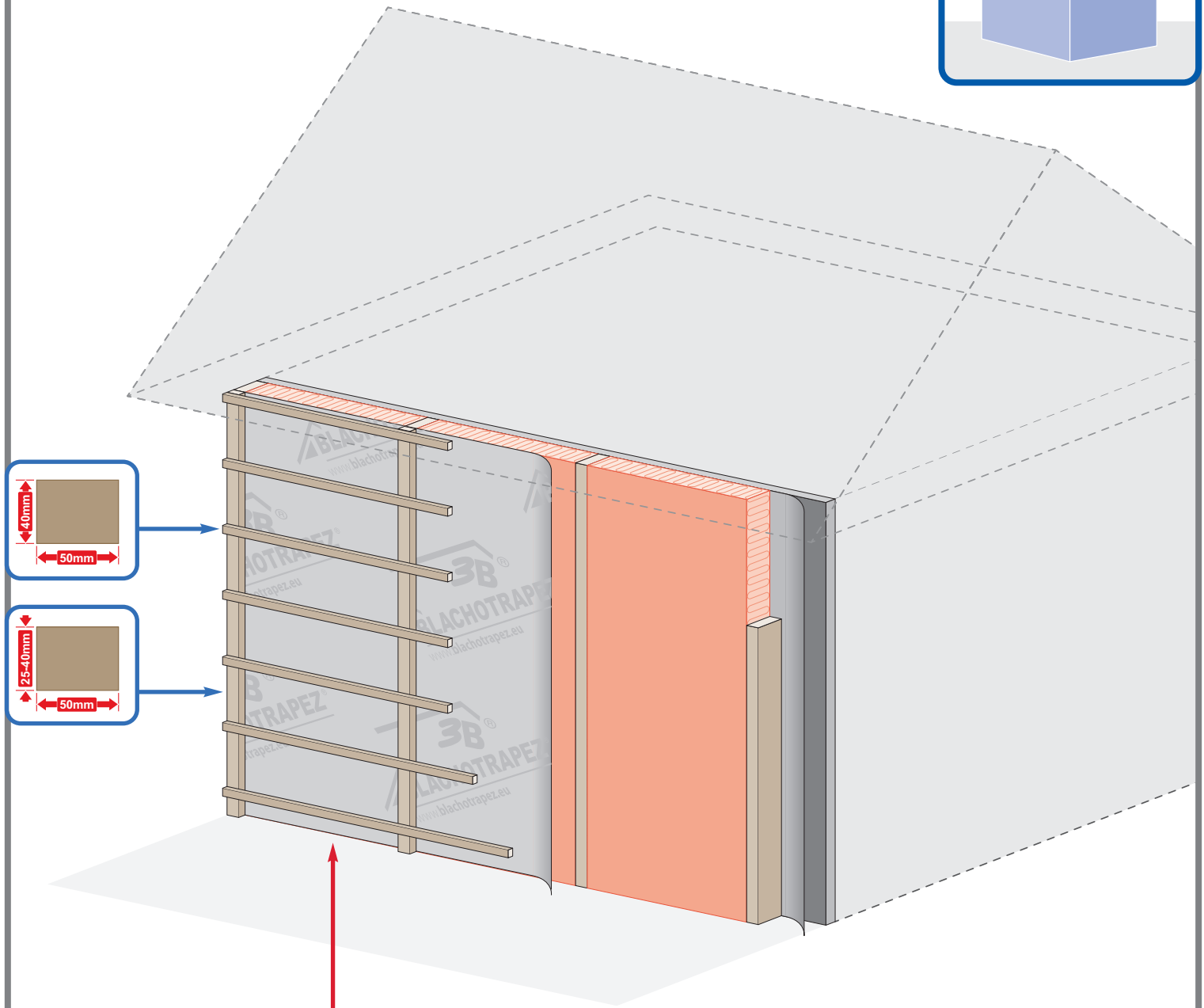
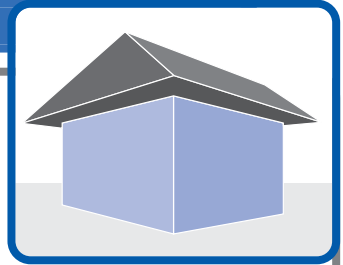
max 4000 r/min



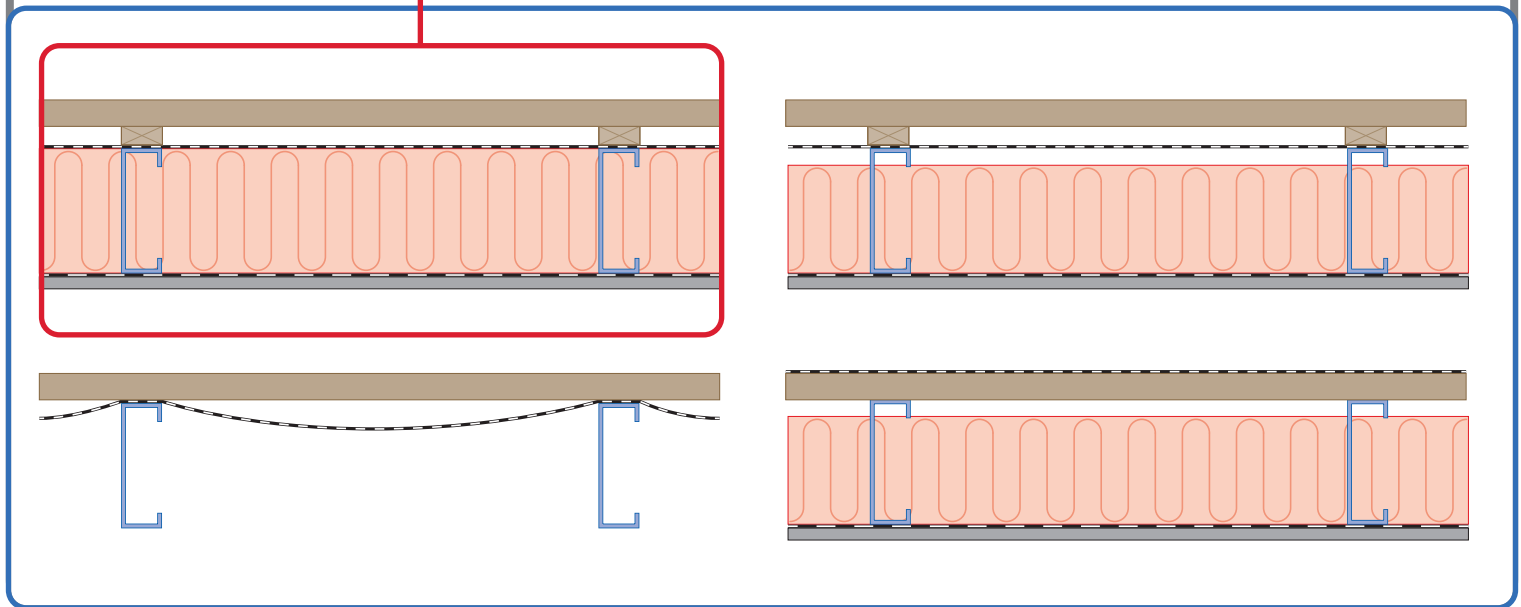
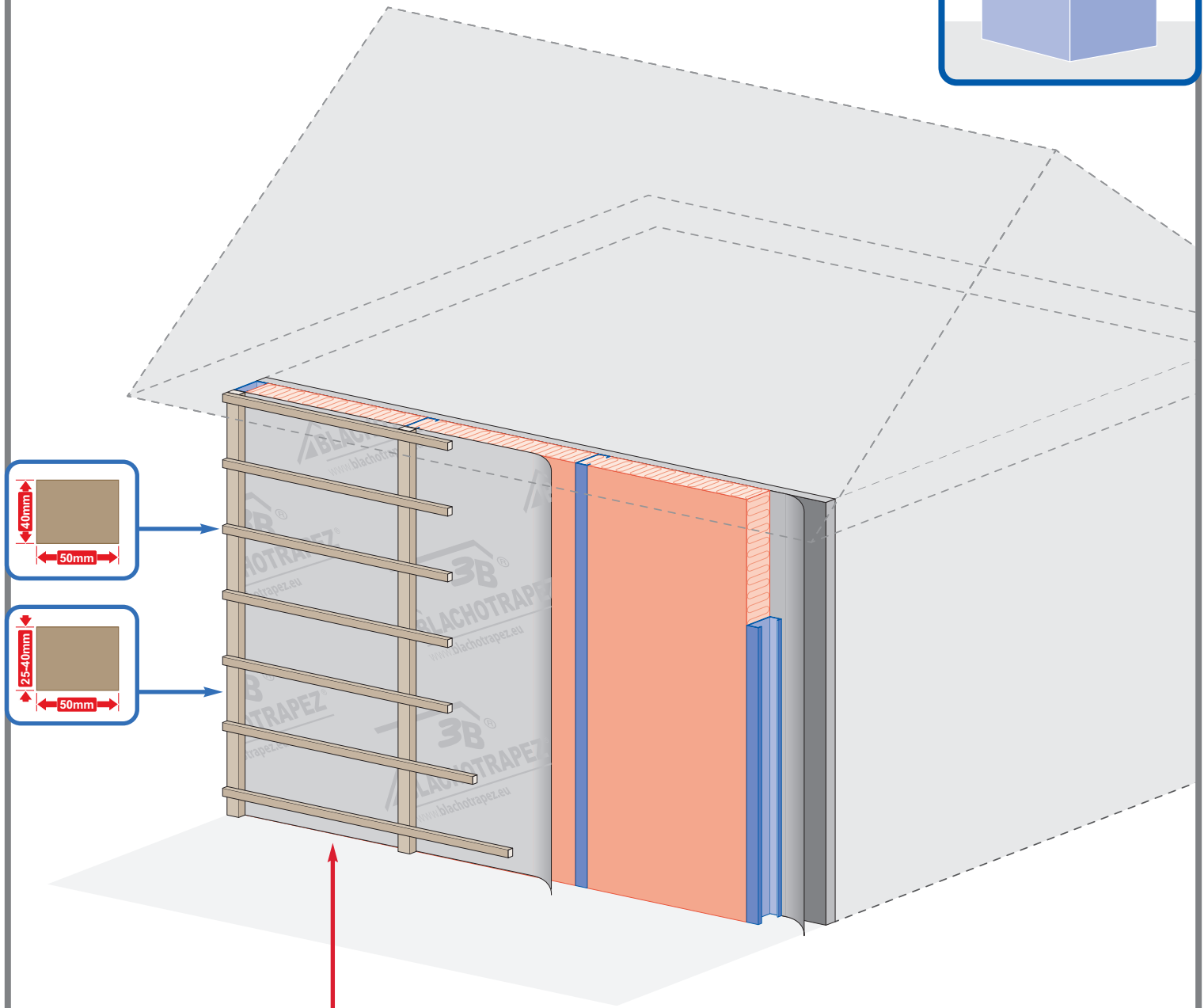
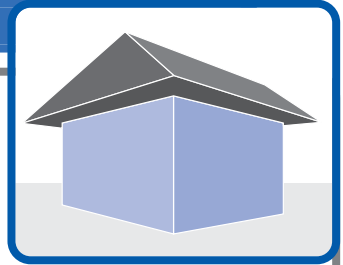
2



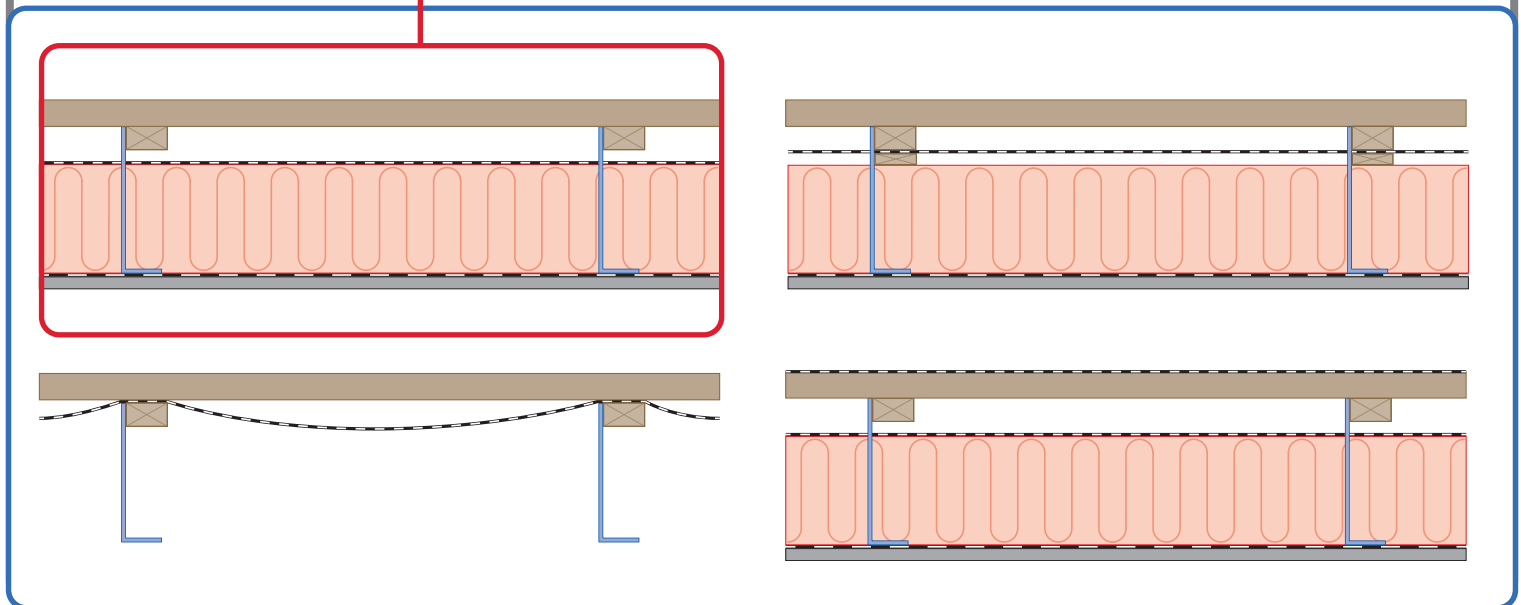
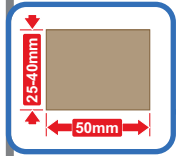
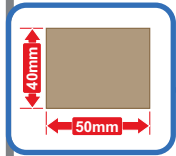
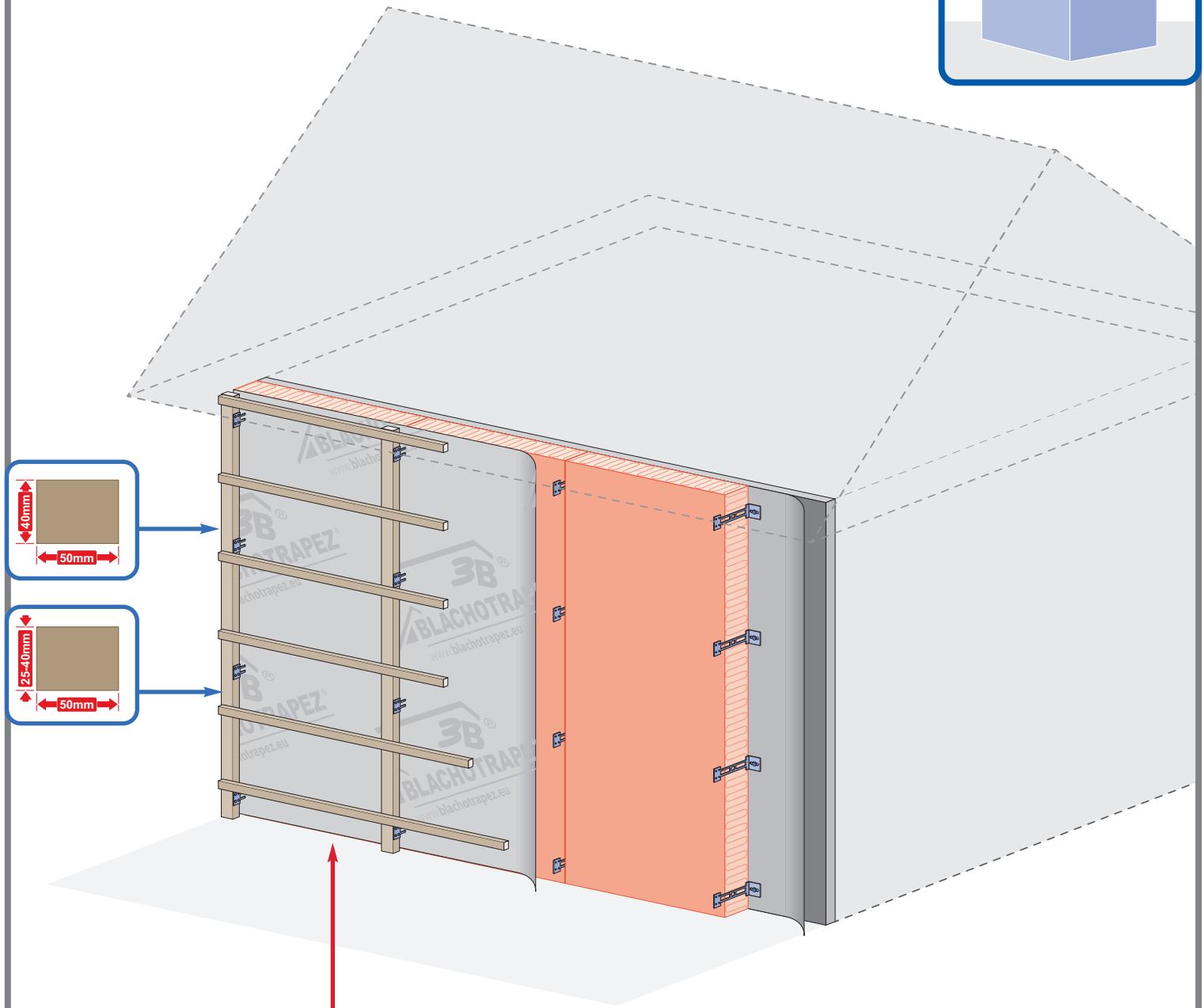
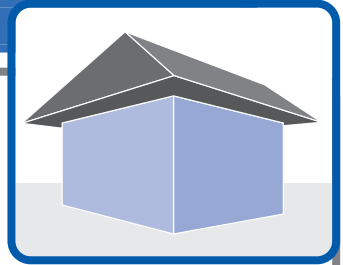
3a



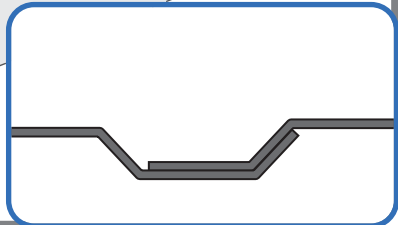
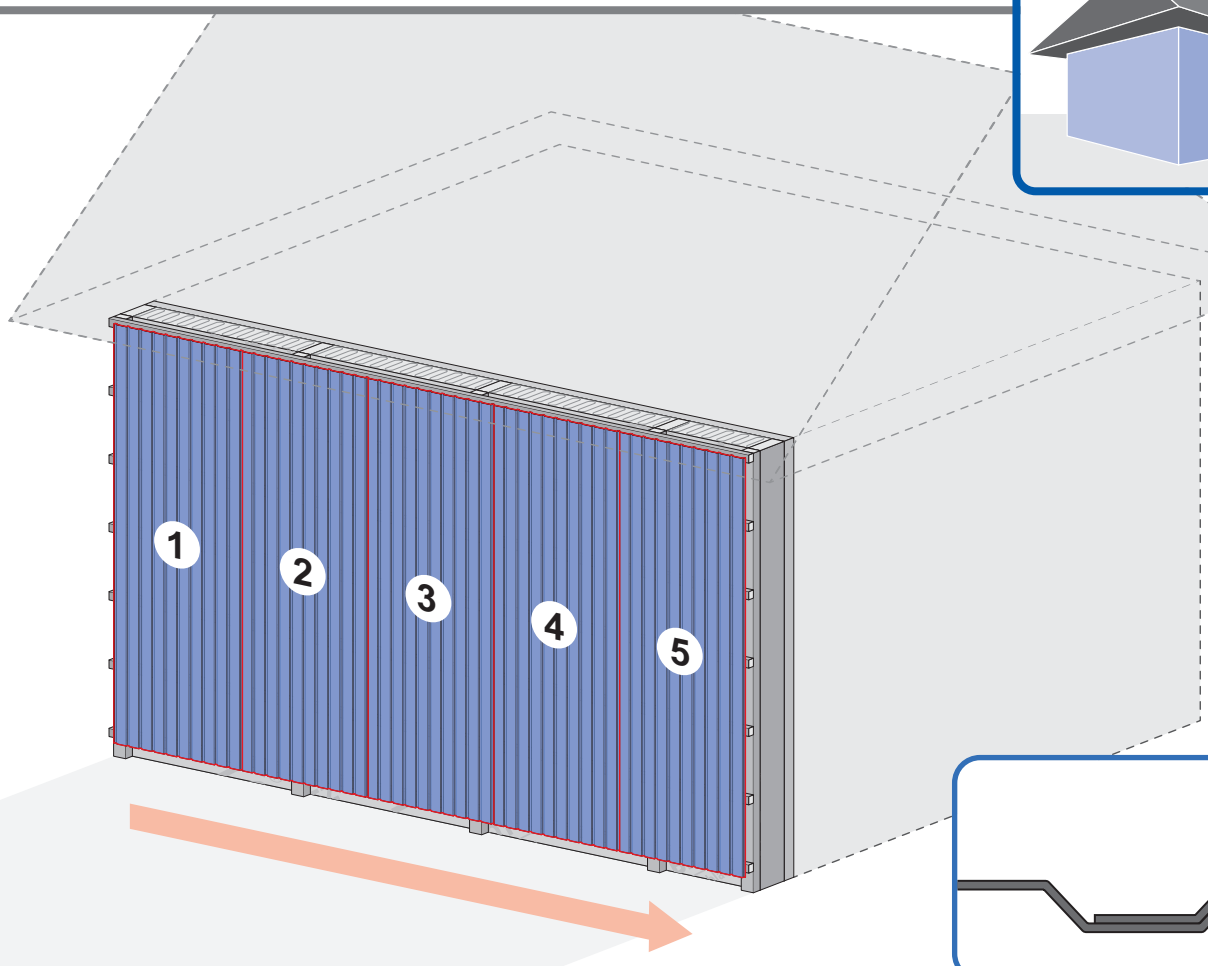
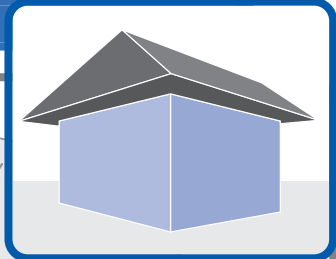
3b



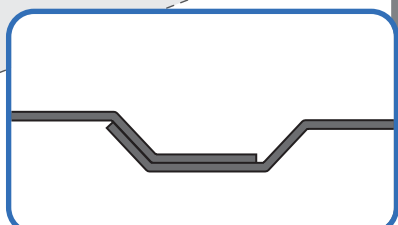
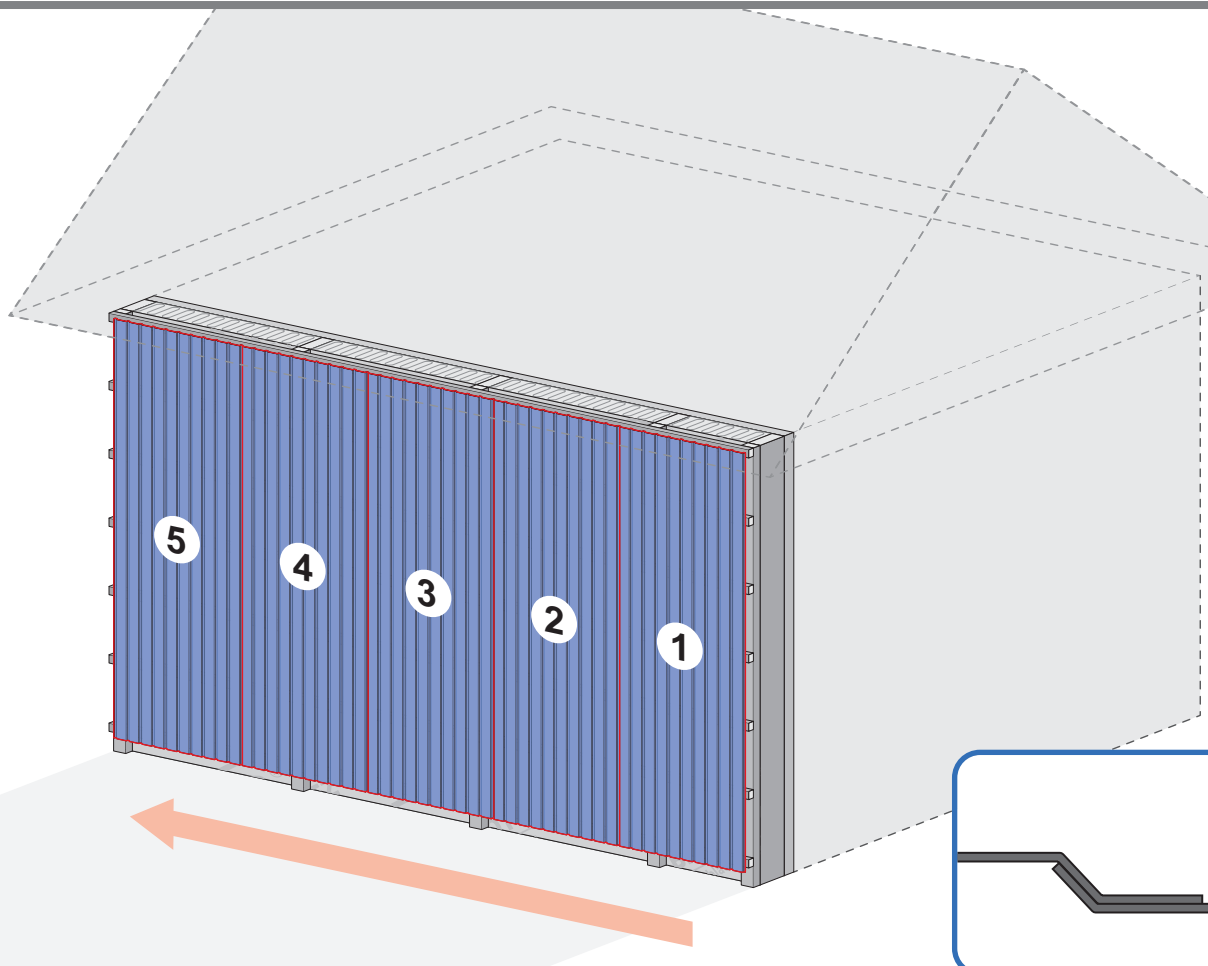
3c



4a

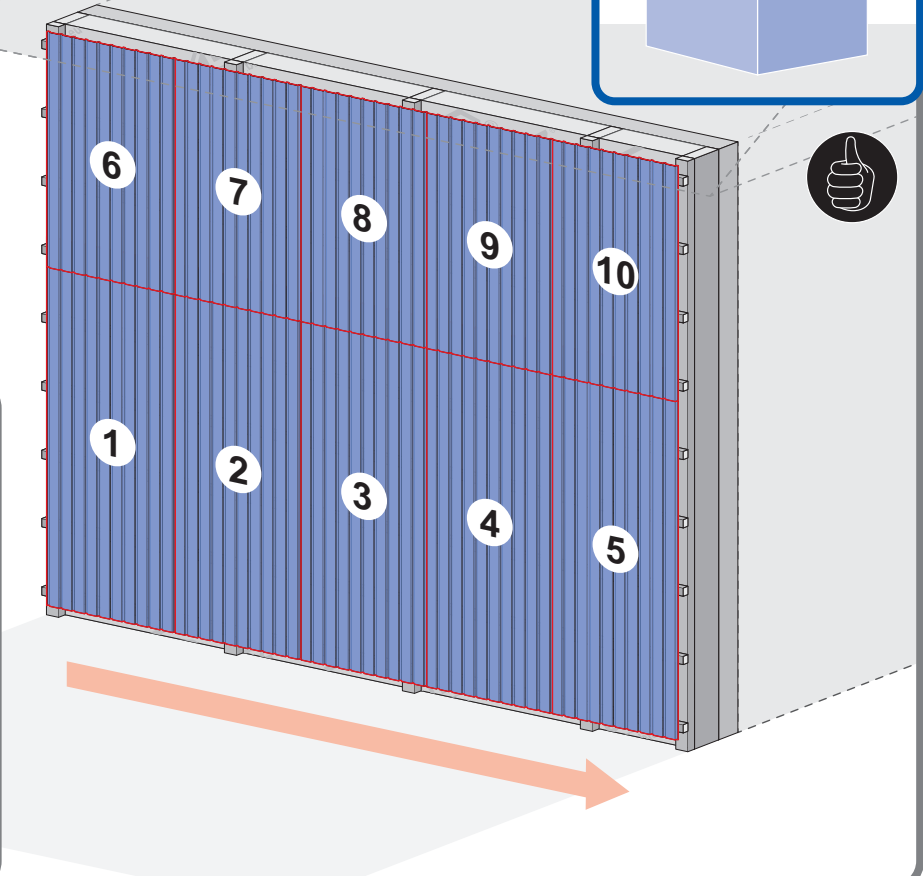
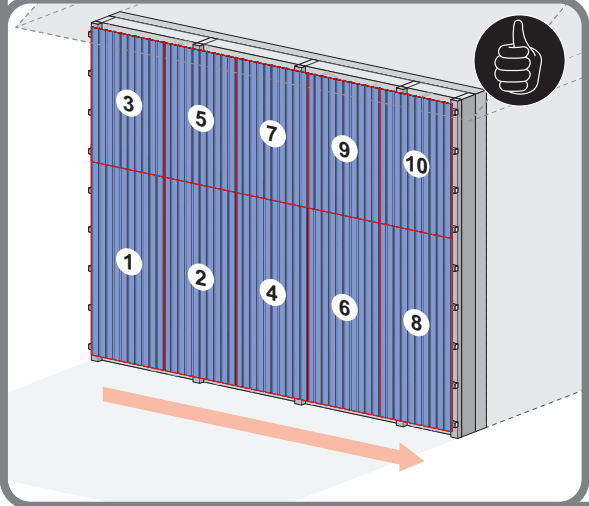
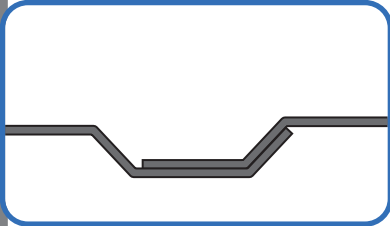
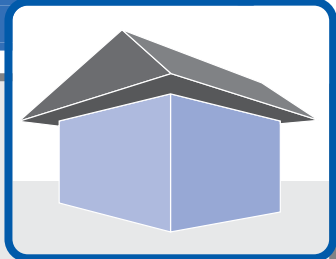


4b

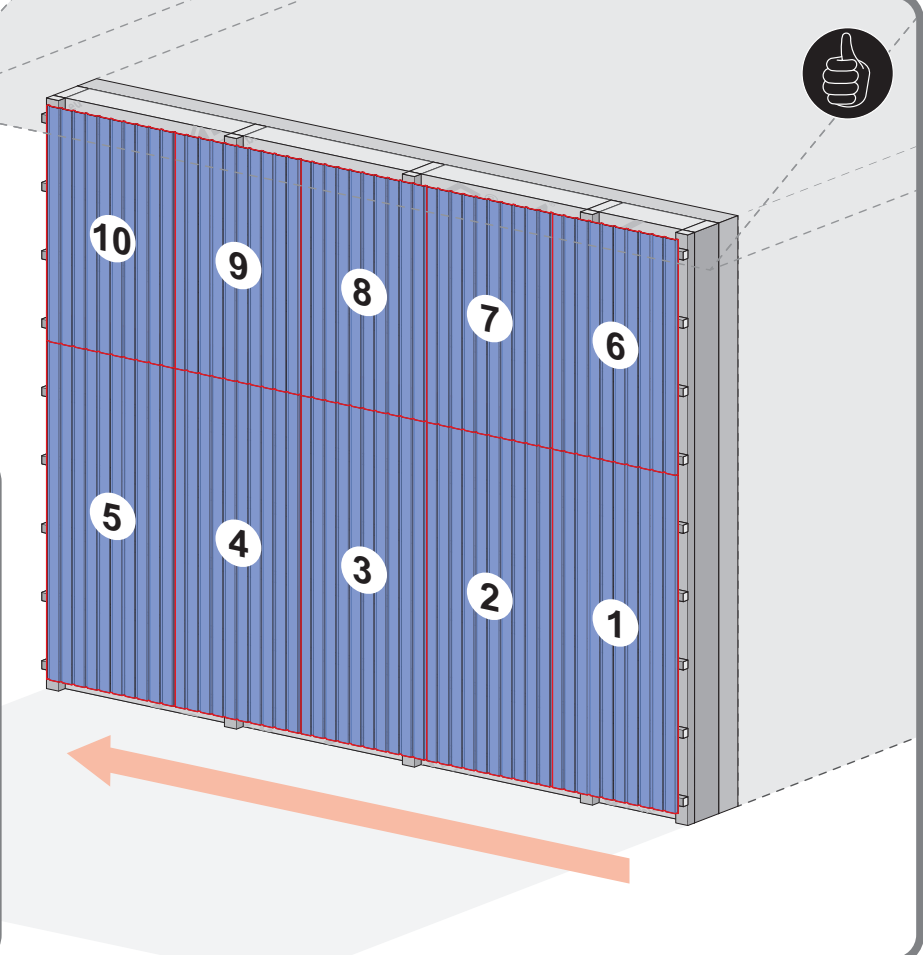
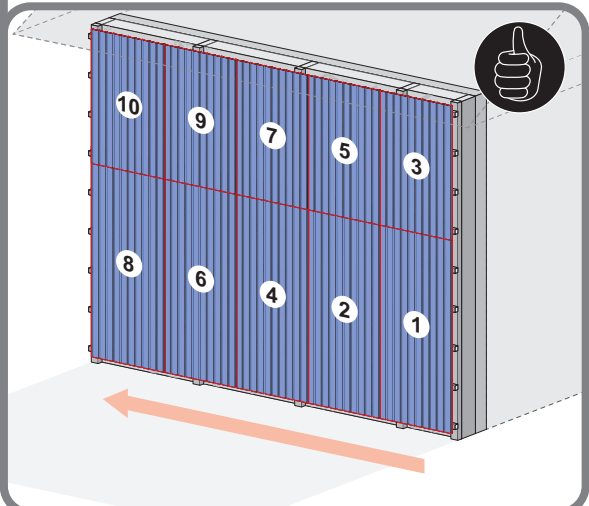
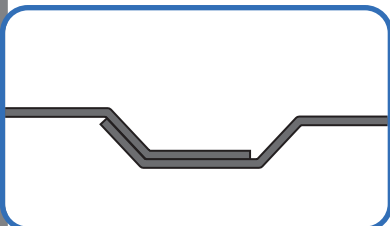




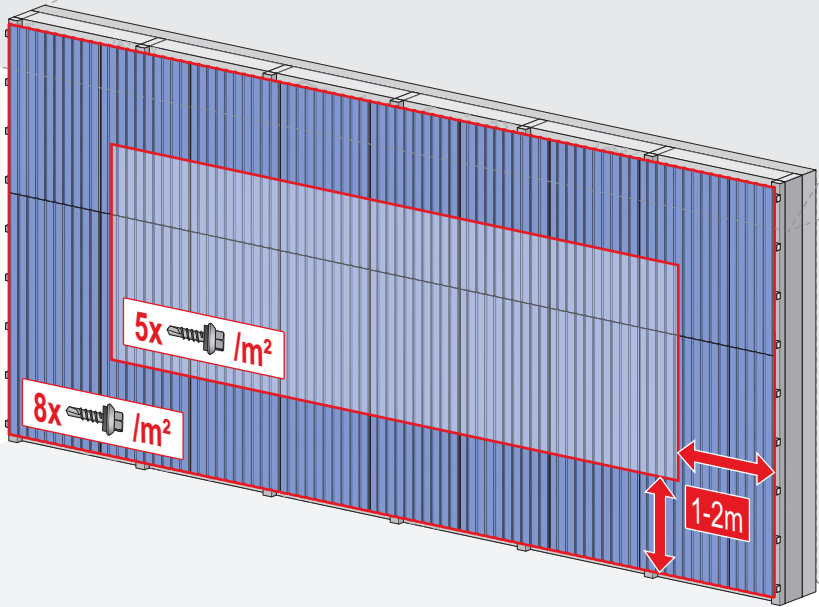
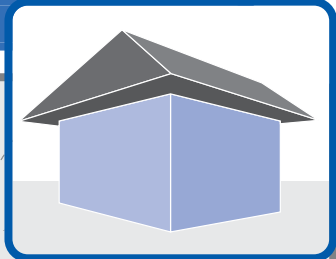
4c



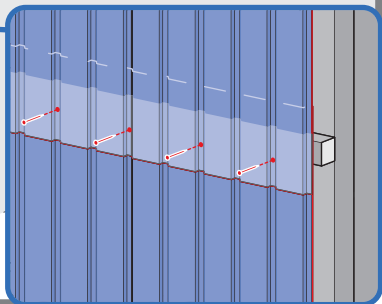
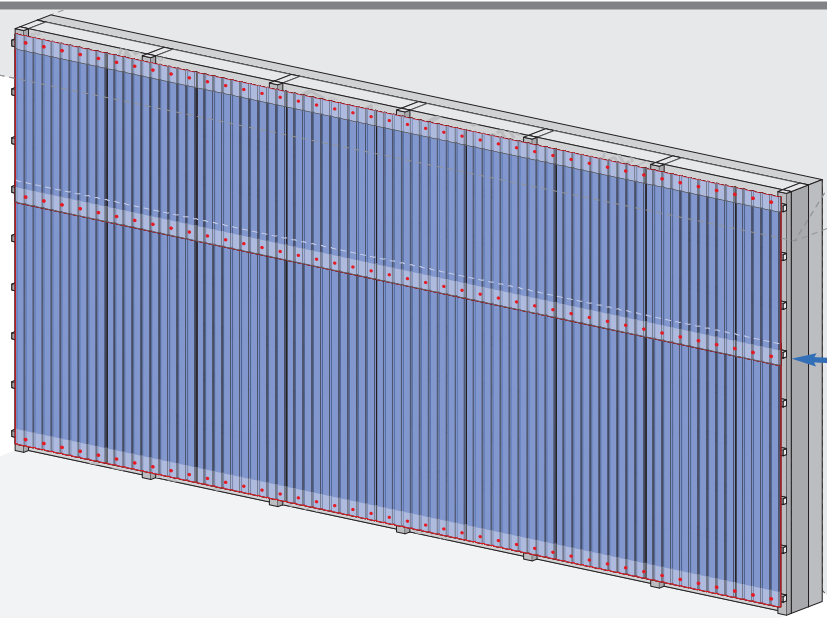
4d



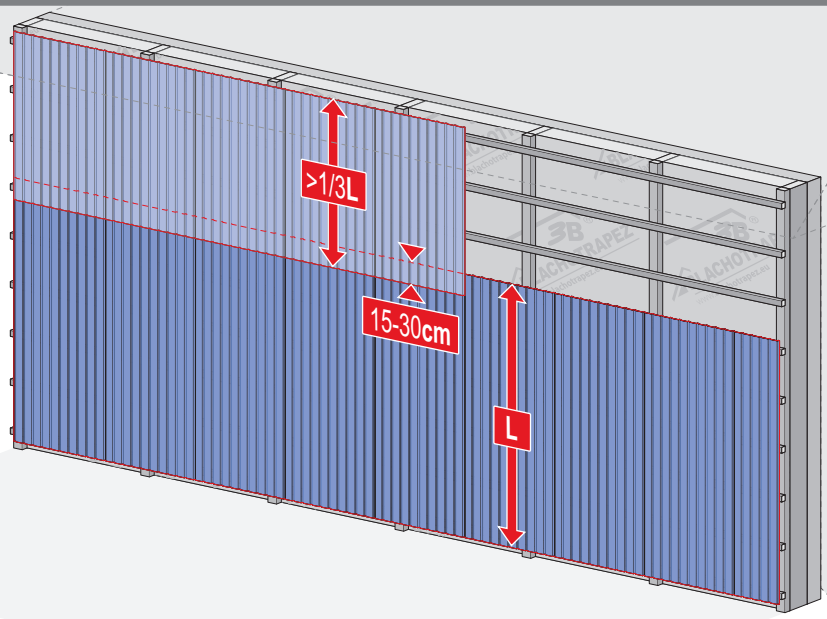
5a



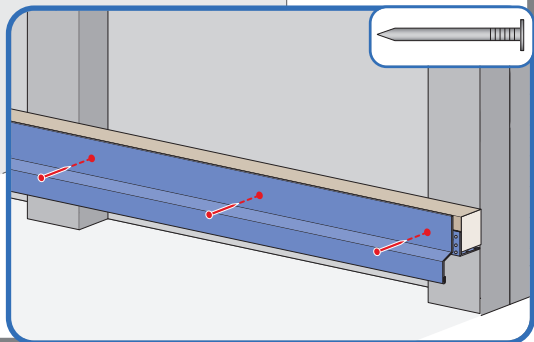
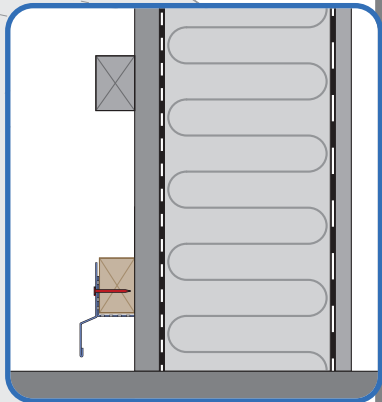
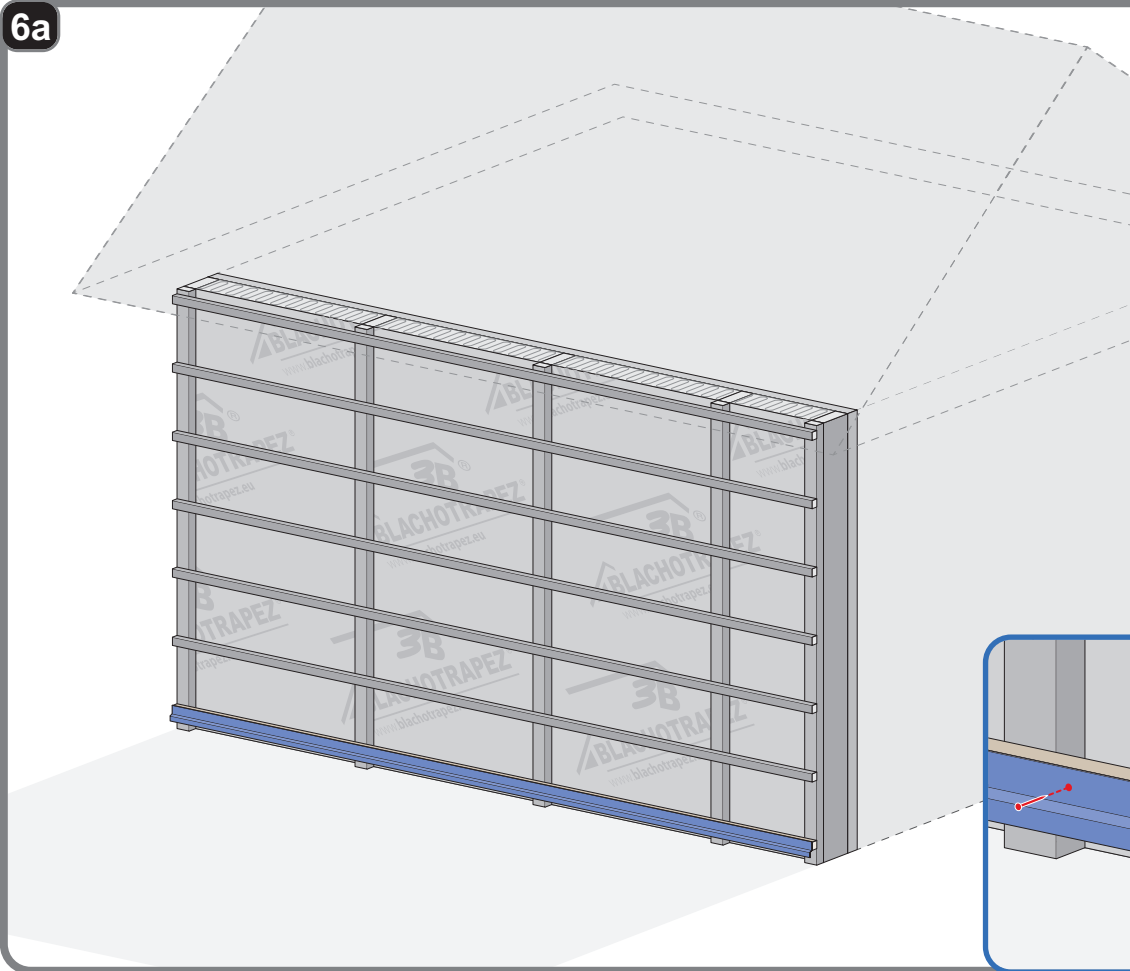
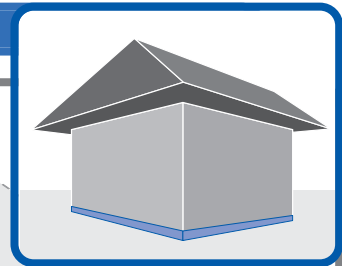
5b



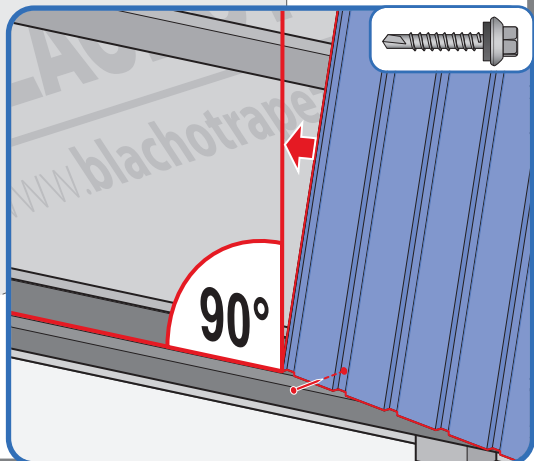
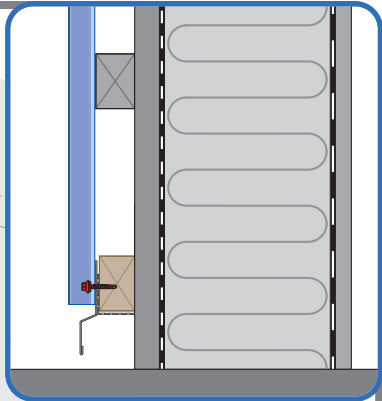
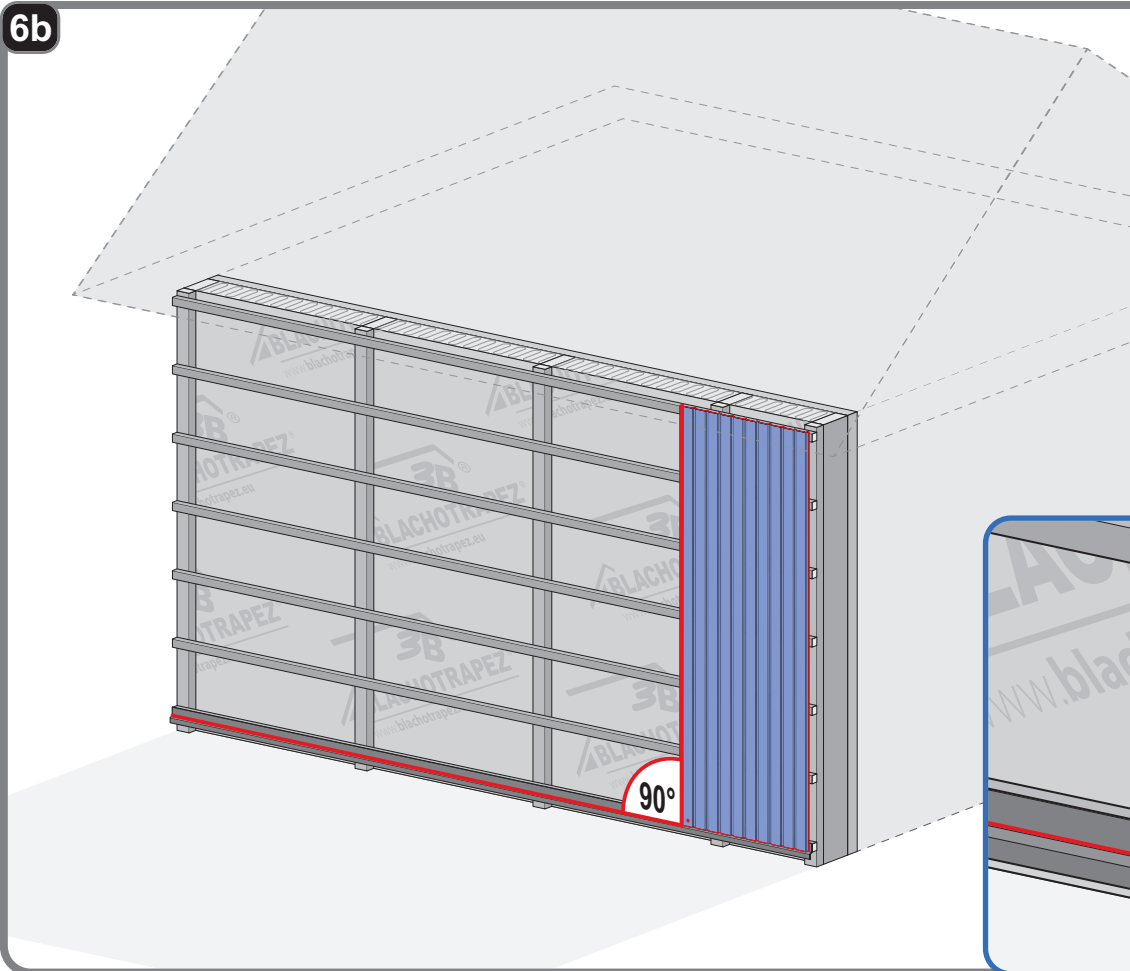
5c



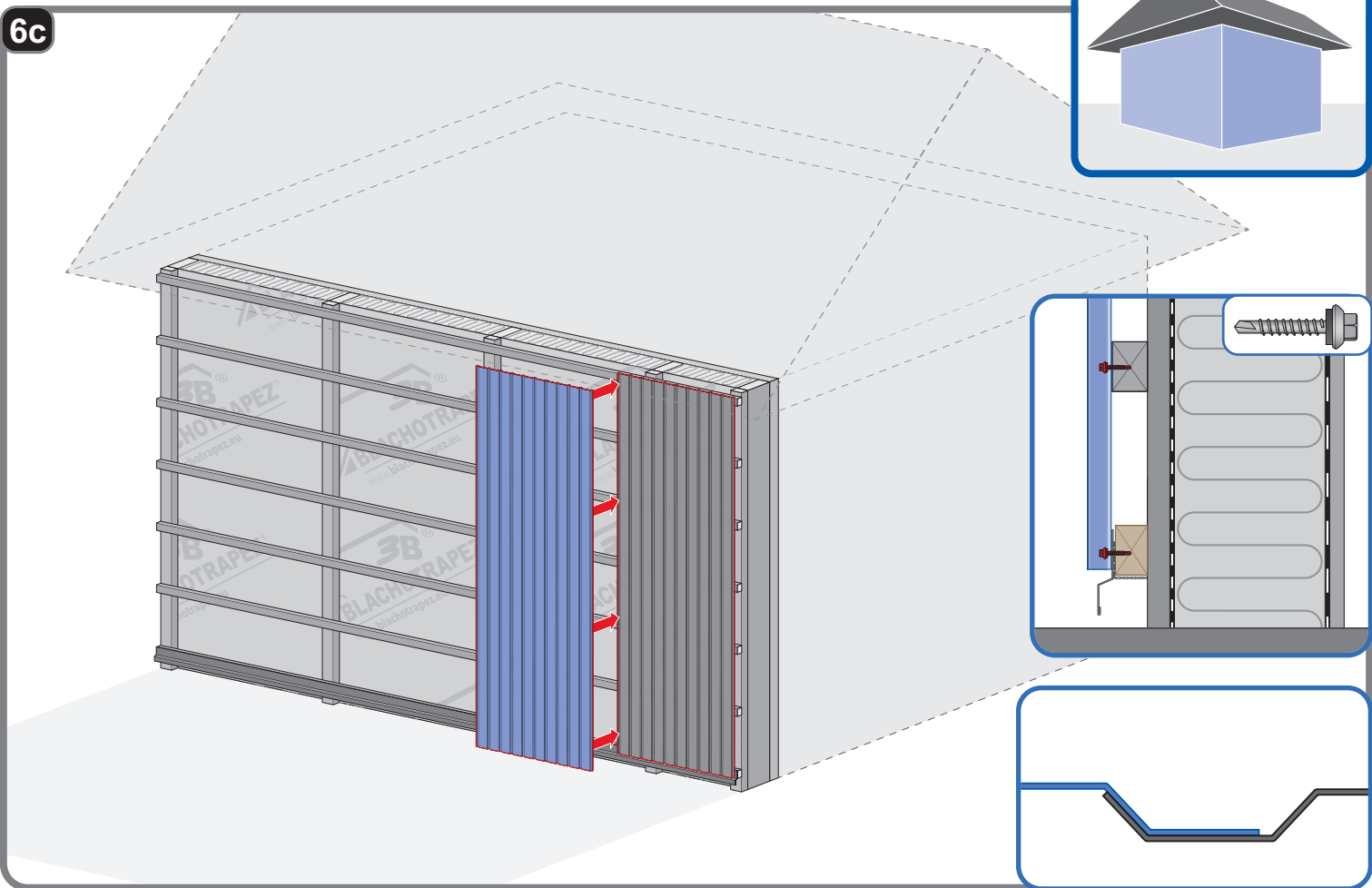
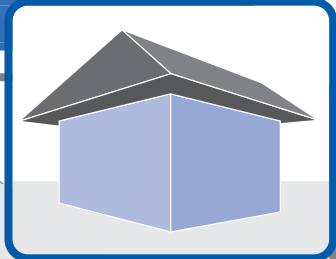
6a



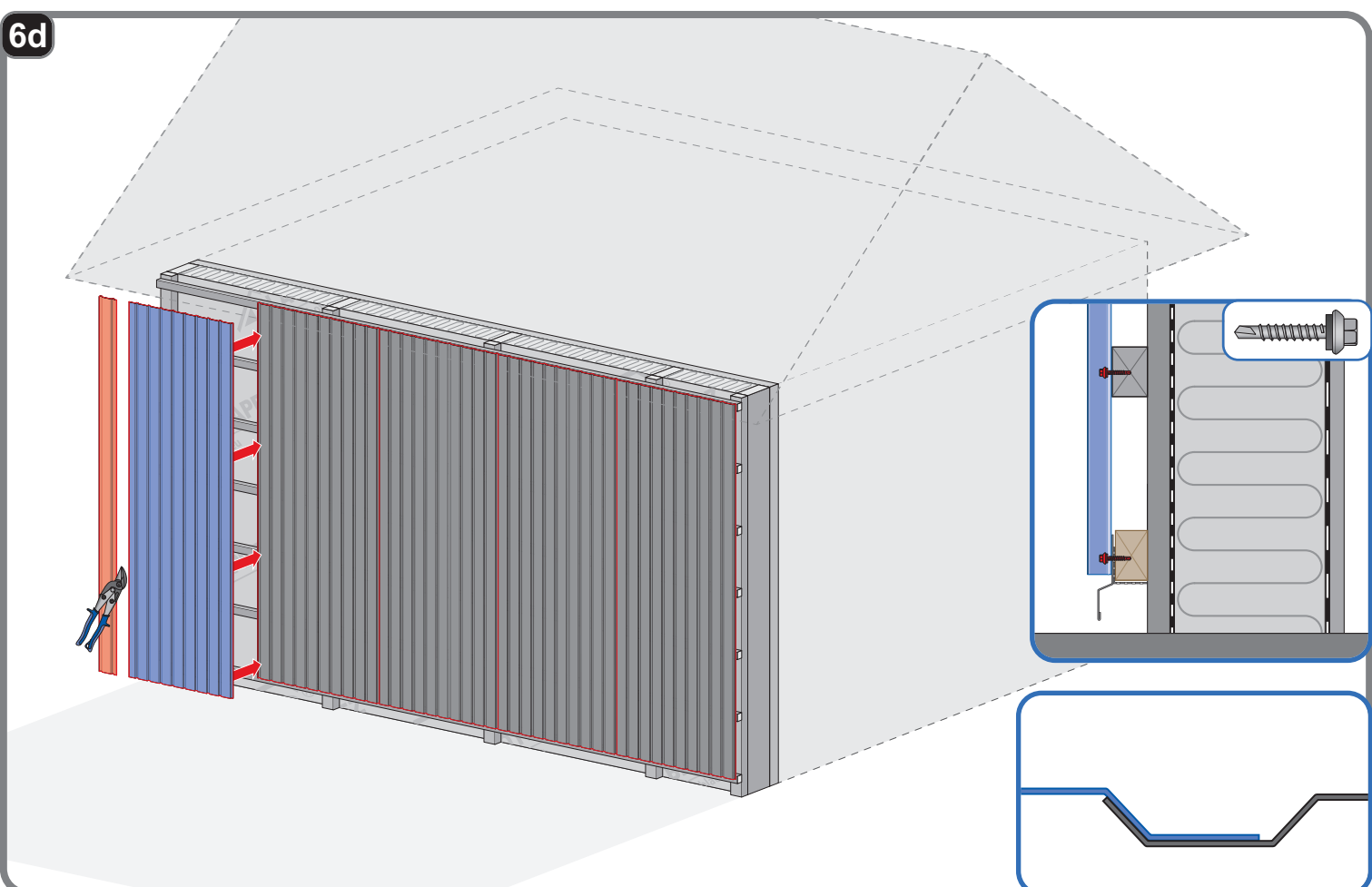
6b



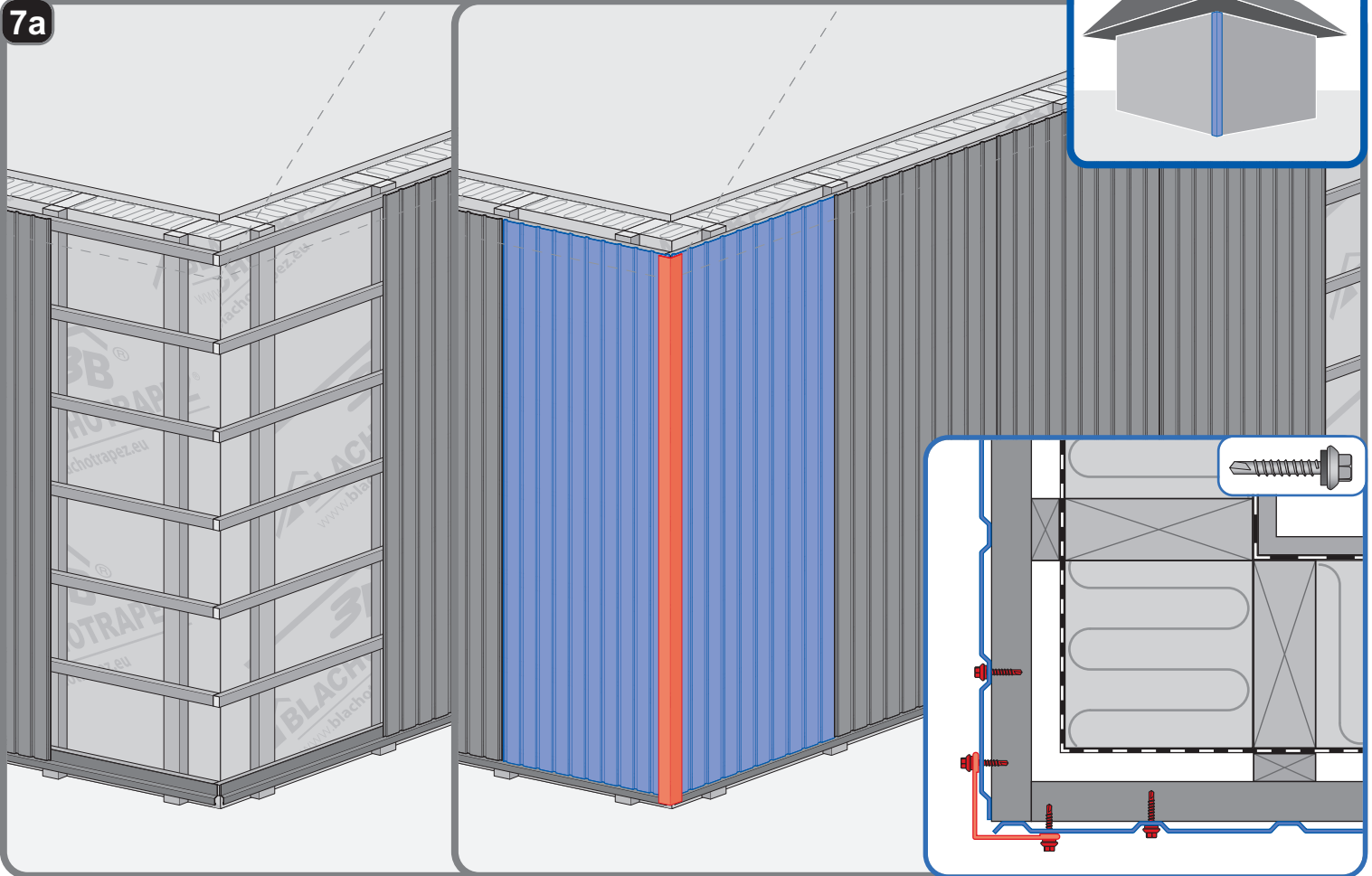
6c



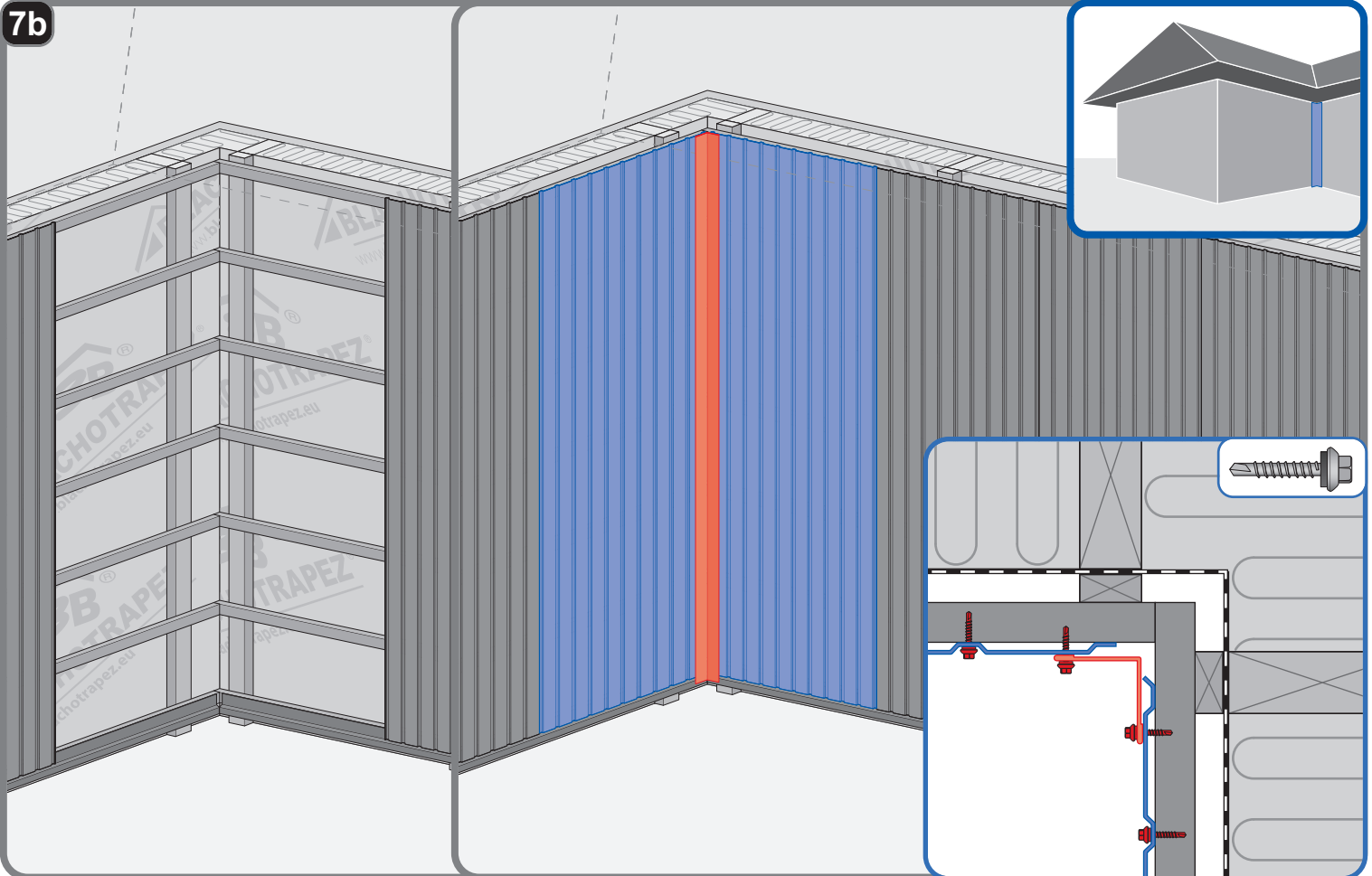
6d



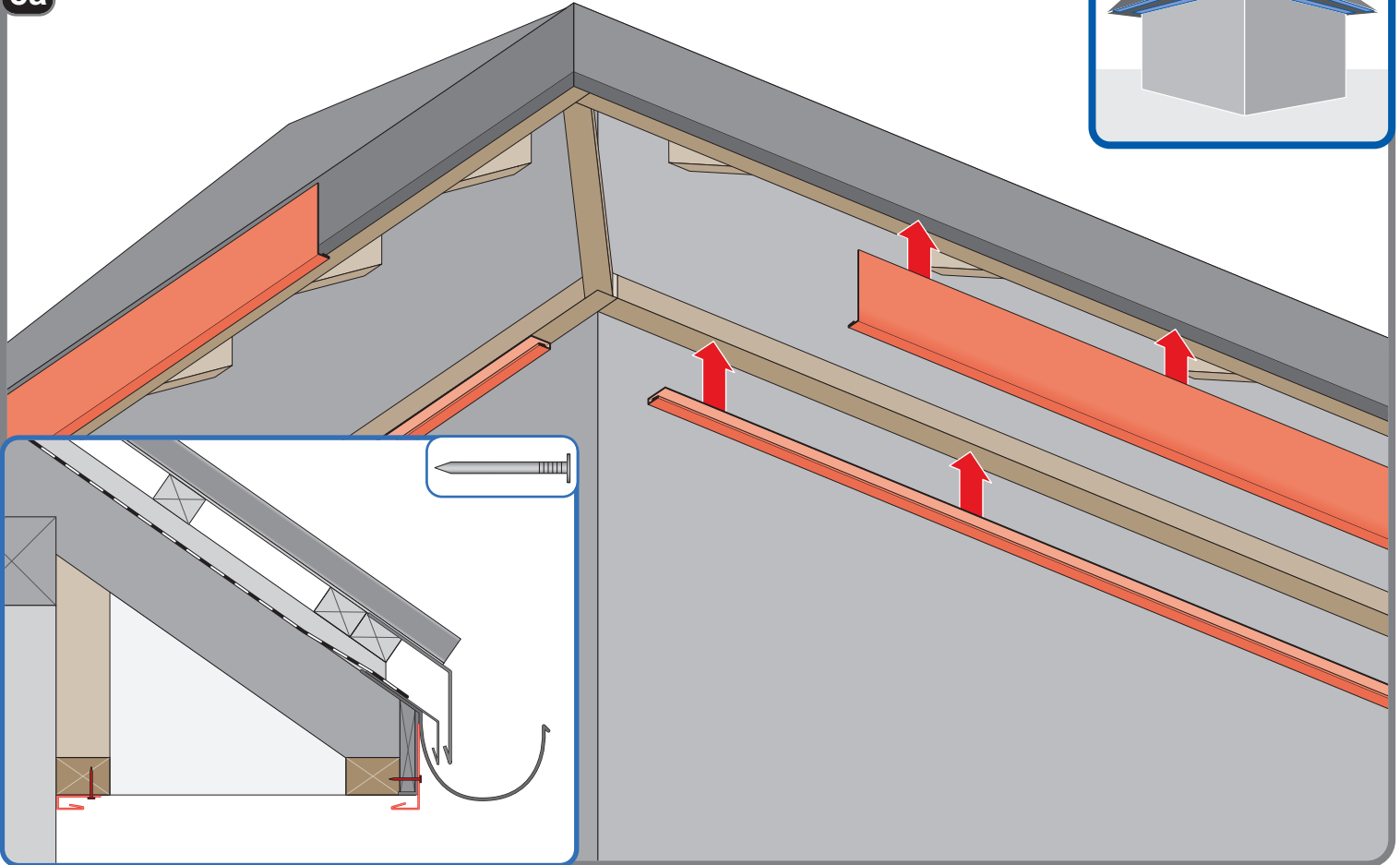
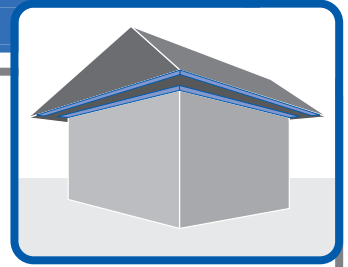
7a



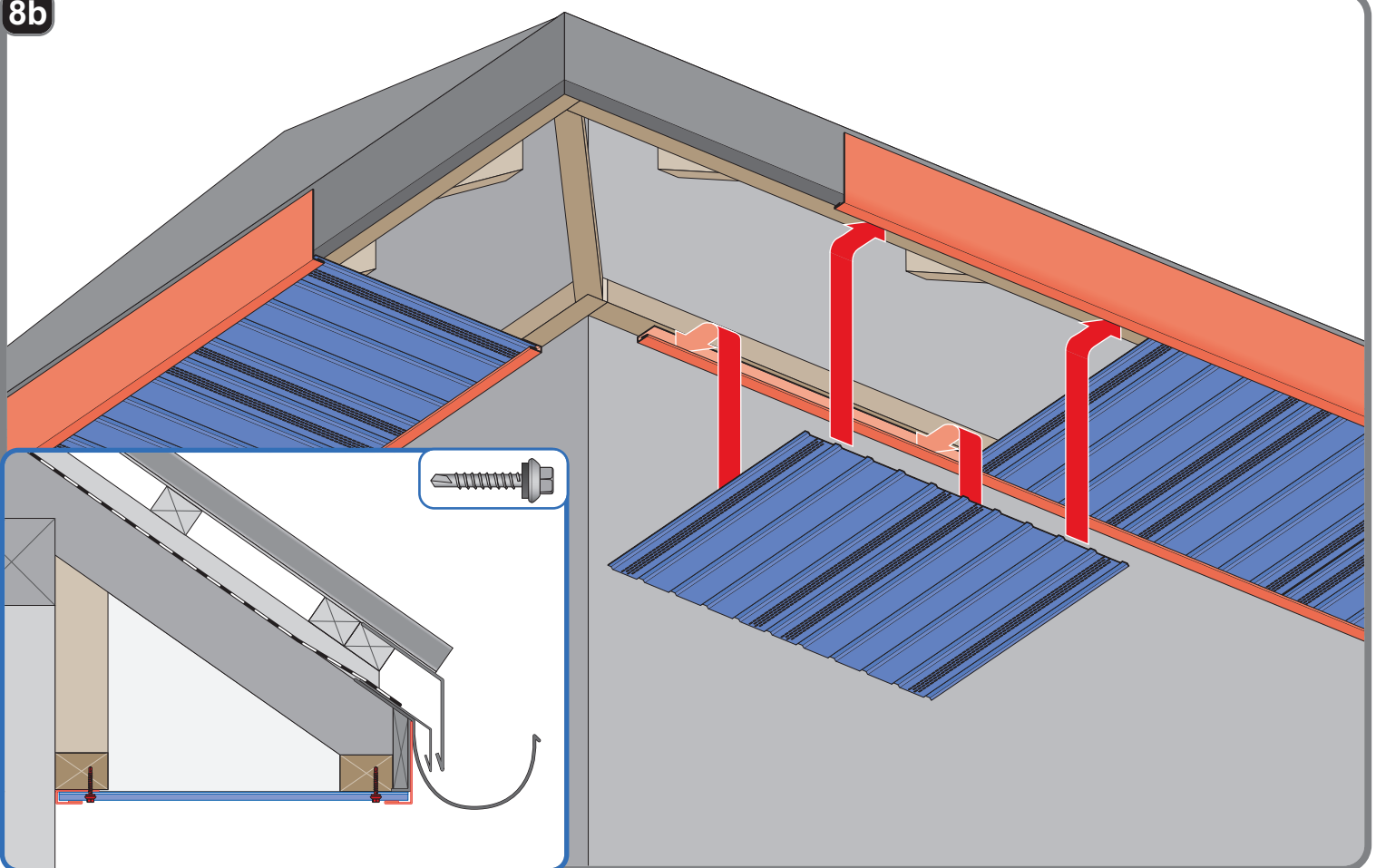
7b



8a

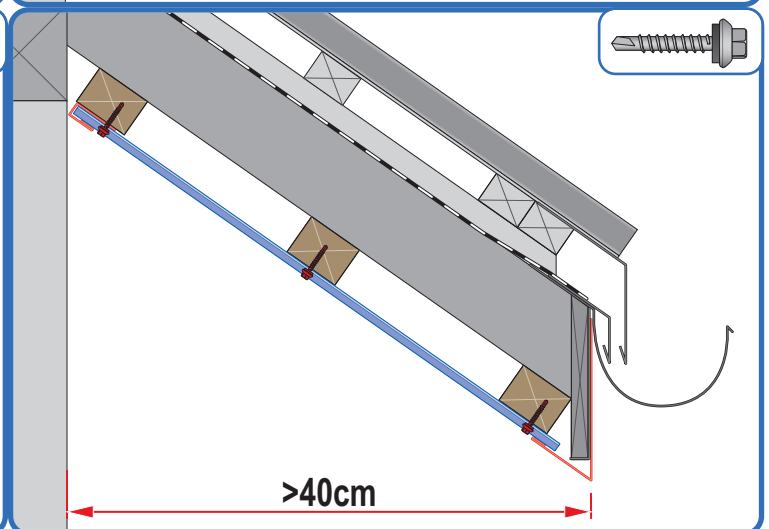
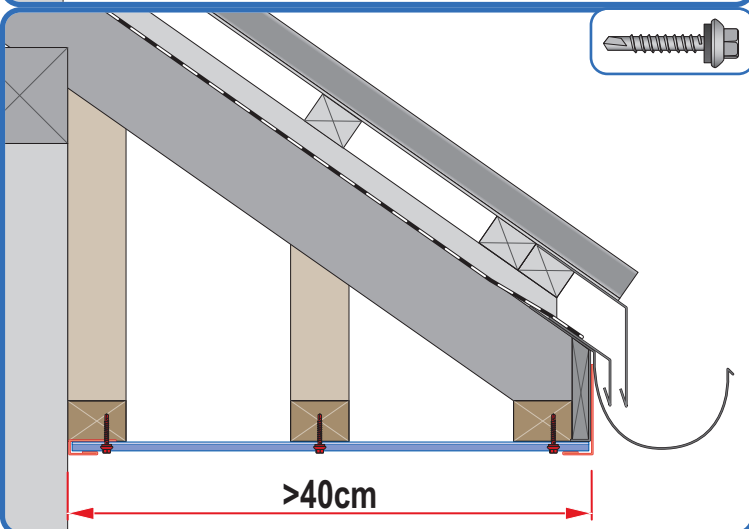
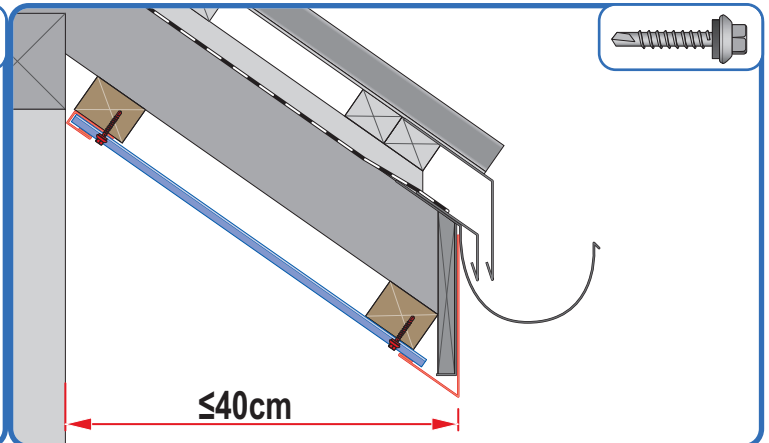
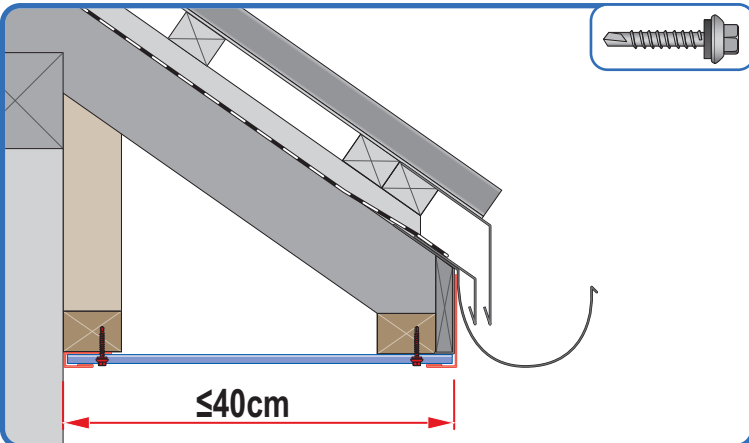
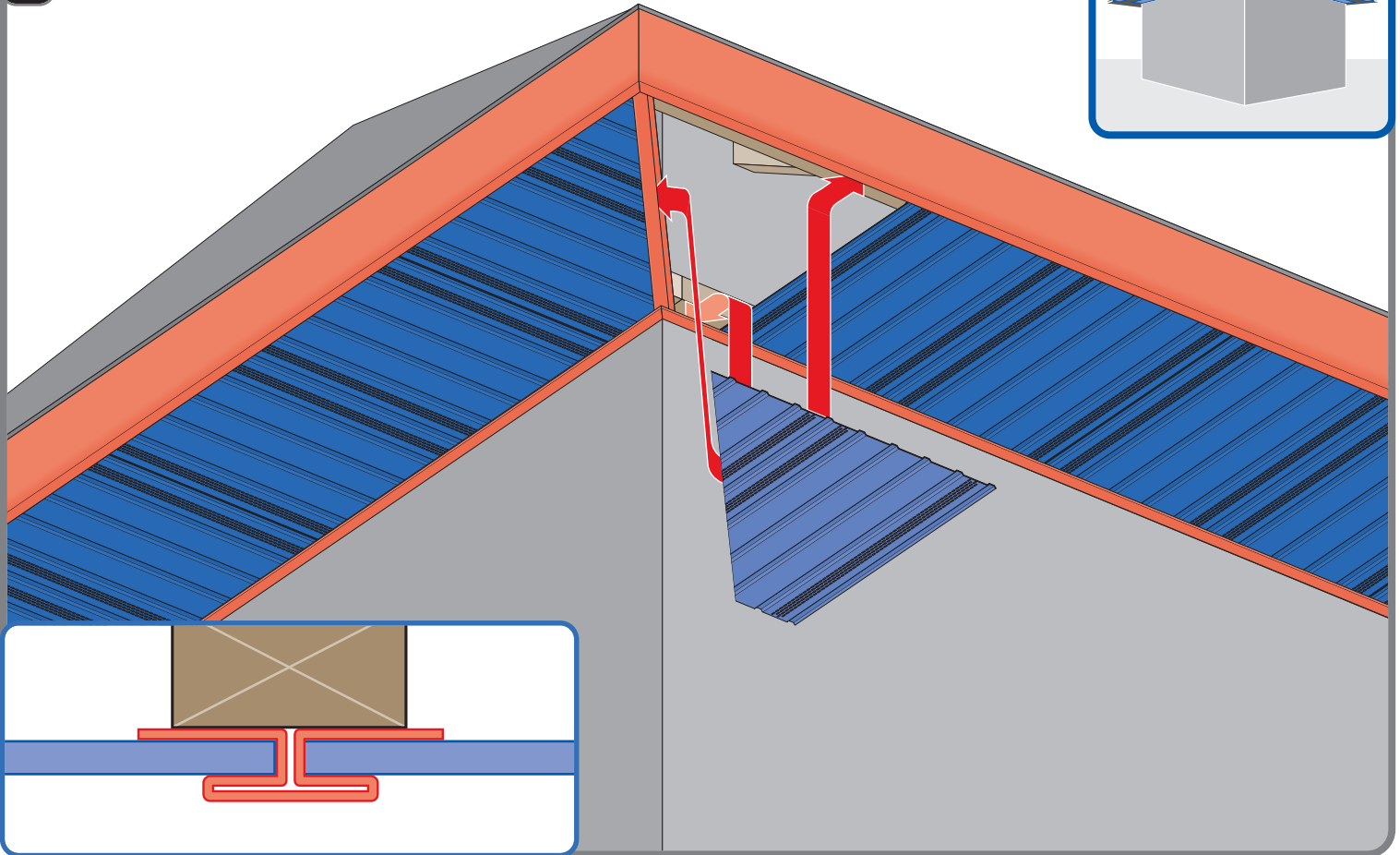
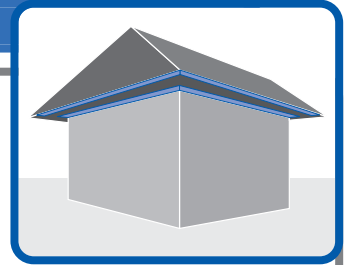


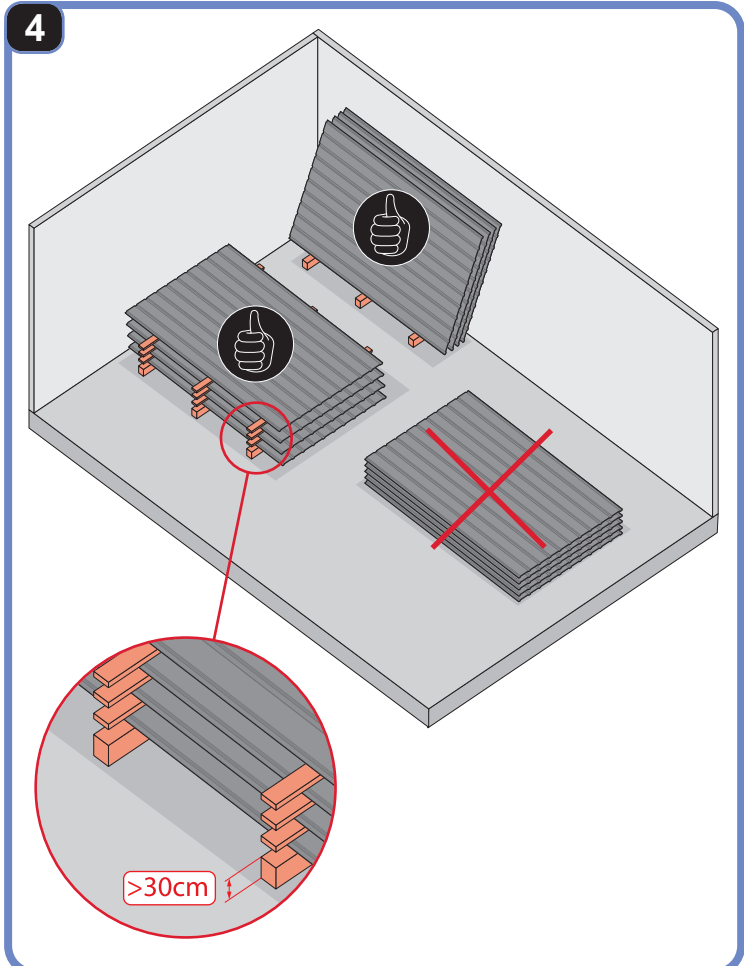
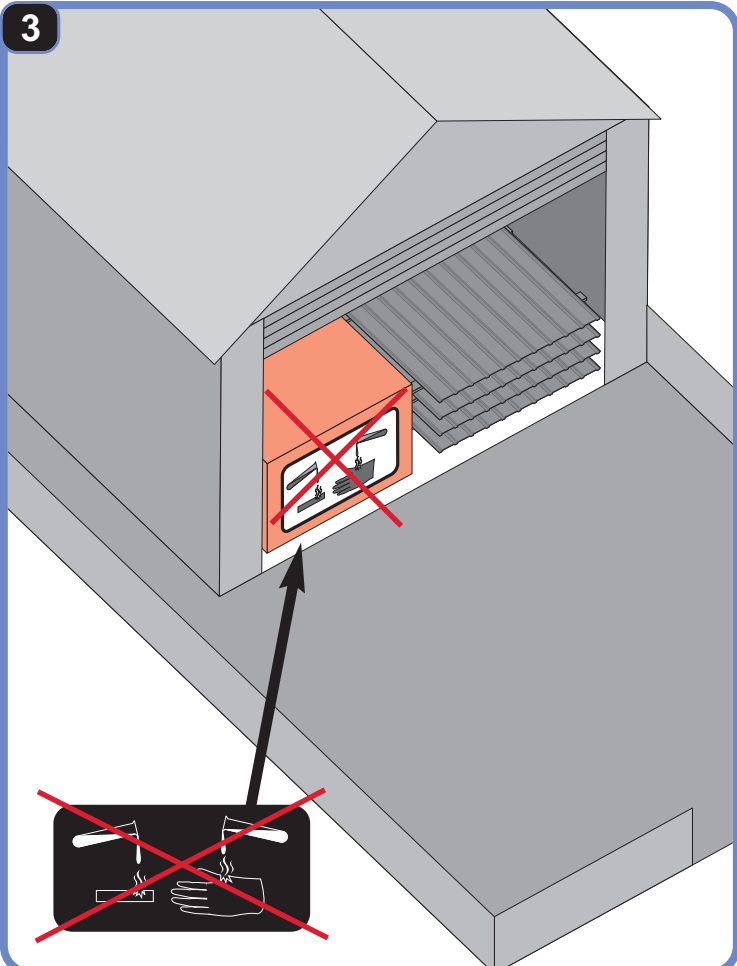
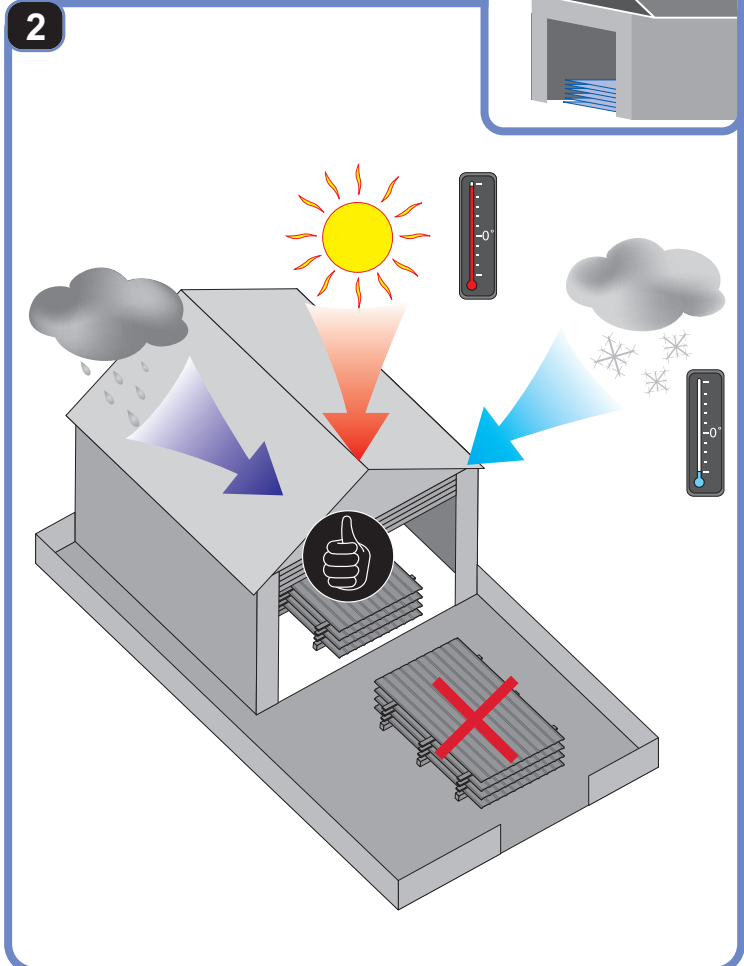
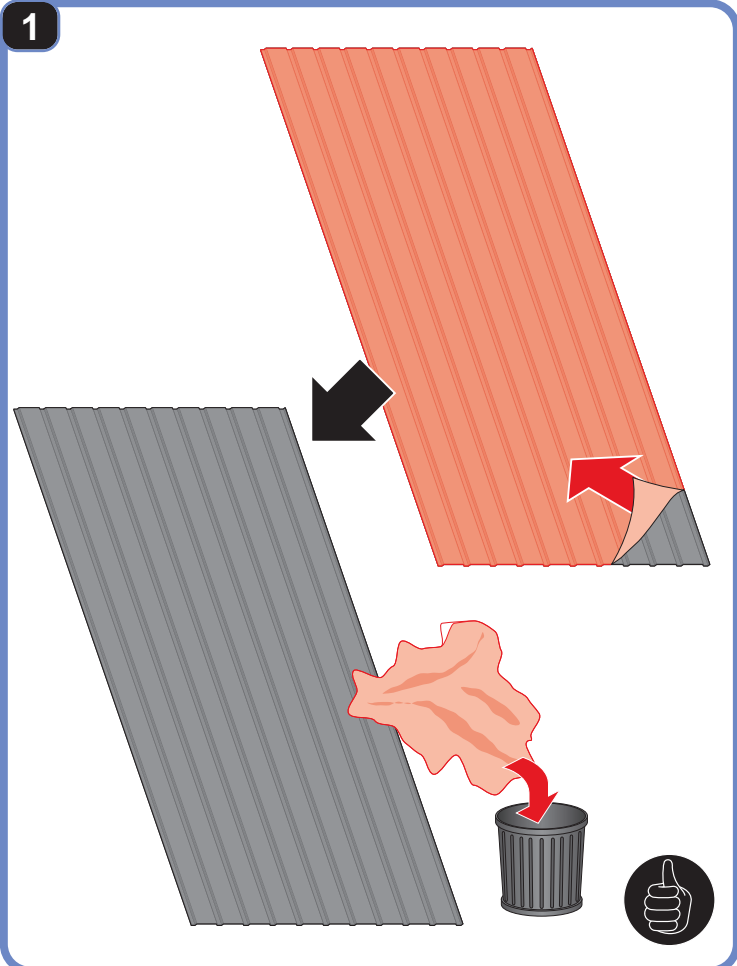
8b



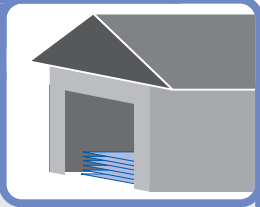


8c

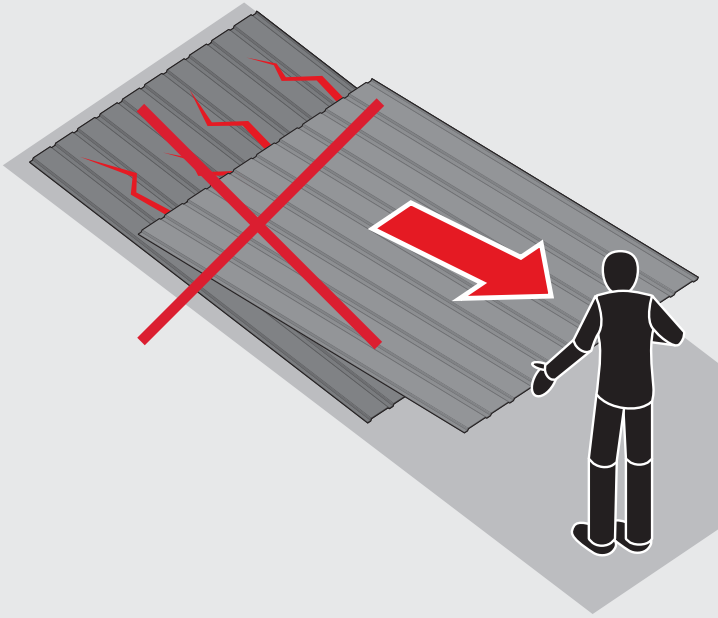




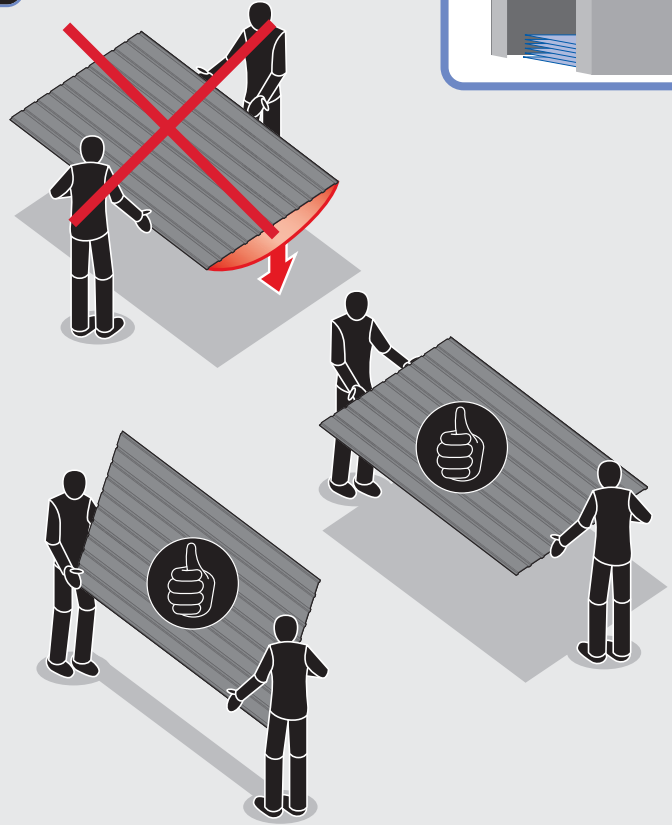




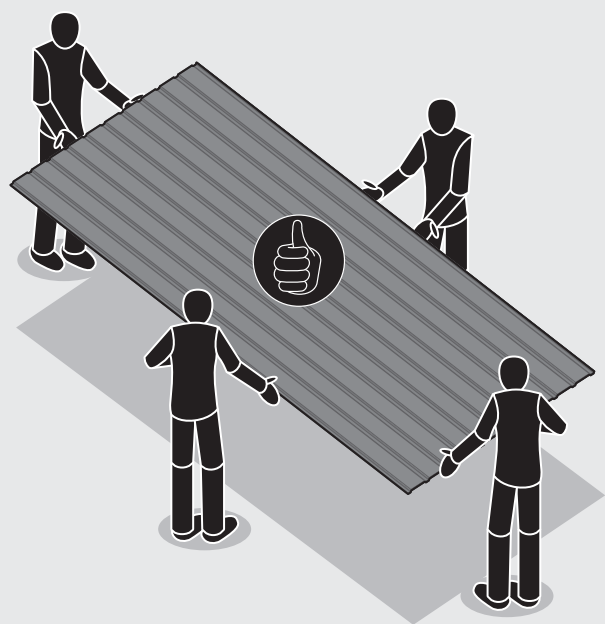
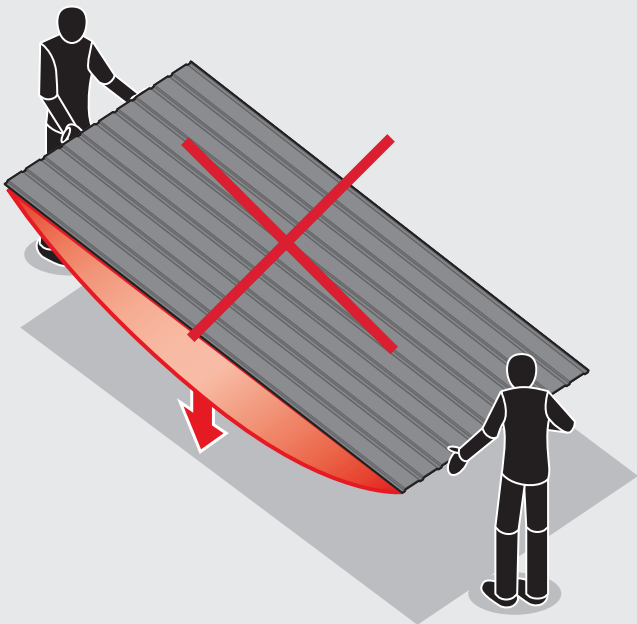
5



6



7





**BLACHOTRAPEZ Sp.z o.o.**  
**ul. Kilińskiego 49A**  
**34-700 RABKA ZDRÓJ, POLSKA**  
**tel. 18 26 85 200, fax. 18 26 85 215**  
**www. blachotrapez.eu**  
**blachotrapez@blachotrapez.eu**

0225

Před instalací si pozorně přečtěte Produktový list, tento návod a dodržujte instalační postupy a pokyny Úřadu pro bezpečnost a ochranu zdraví při práci (OSHA). Při pohybu a práci na střeše se doporučuje používat osobní ochranné prostředky. Tyto prostředky zahrnují mimo jiné ochranu proti pádu a osobní ochranné prostředky, jako jsou rukavice, ochranné brýle, ochranná přilba a bezpečnostní postroj atd. Je třeba se vyvarovat kontaktu s ostrými hranami plechu.

Plechové výrobky jsou recyklovatelné. Likvidace by měla být provedena na sběrném místě selektivního odpadu na konci životního cyklu produktu.

Montáž střešních krytin vyžaduje odborné znalosti, vědomosti a zkušenosti. Tento návod je ilustrativním materiálem a nezbavuje zhotovitele povinnosti dodržovat pravidla pokrývačského řemesla a normy. Způsoby montáže uvedené v tomto návodu jsou obecnými vodítky. Požadovaný způsob montáže se může lišit od způsobu uvedeného v návodu v závislosti na typu střechy nebo místním řešení. Obecná vodítka a pokyny pro montáž naleznete v pokynech projektanta nebo se obraťte na naše oddělení technické podpory. Zkušení zhotovitelé mají individuální řešení, která společnost BLACHOTRAPEZ akceptuje.